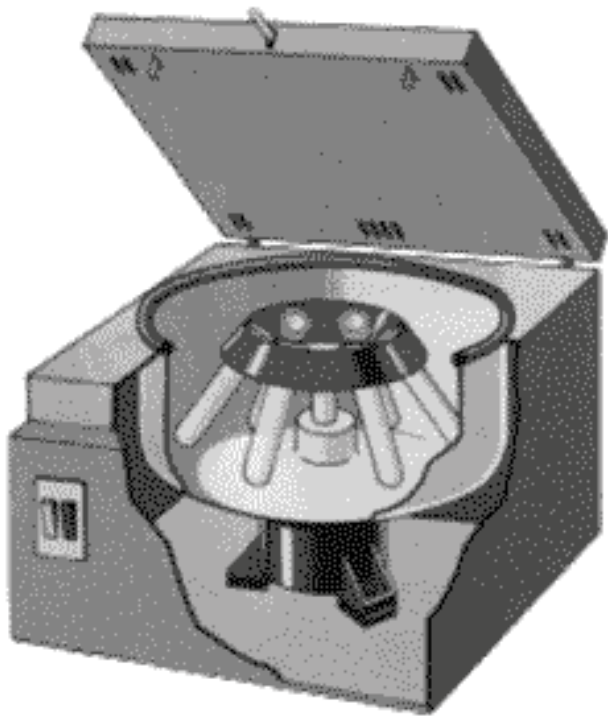


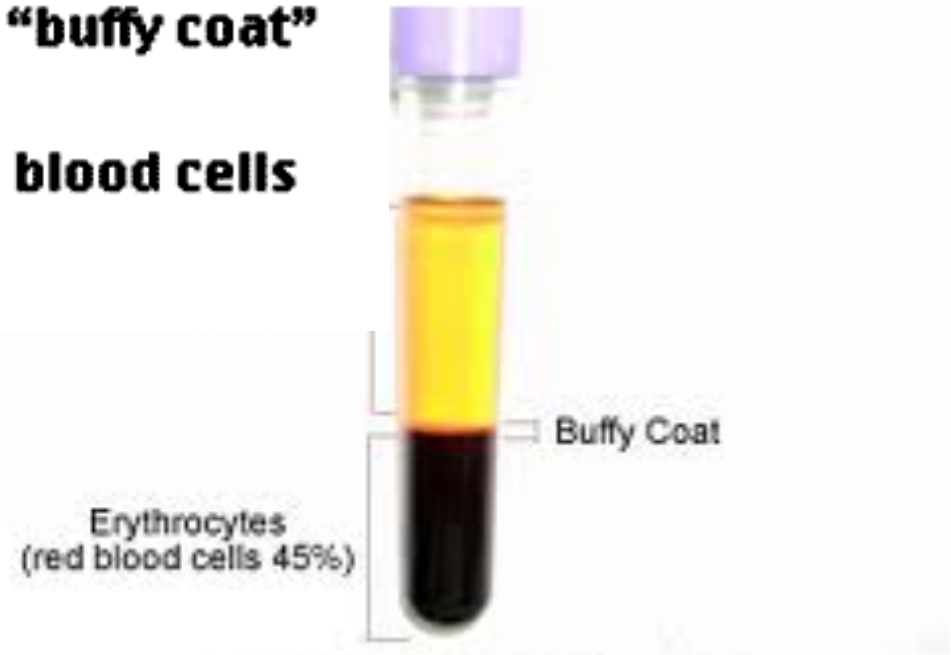
Composition of Blood



← Plasma

← White blood cells,
the "buffy coat"

← Red blood cells

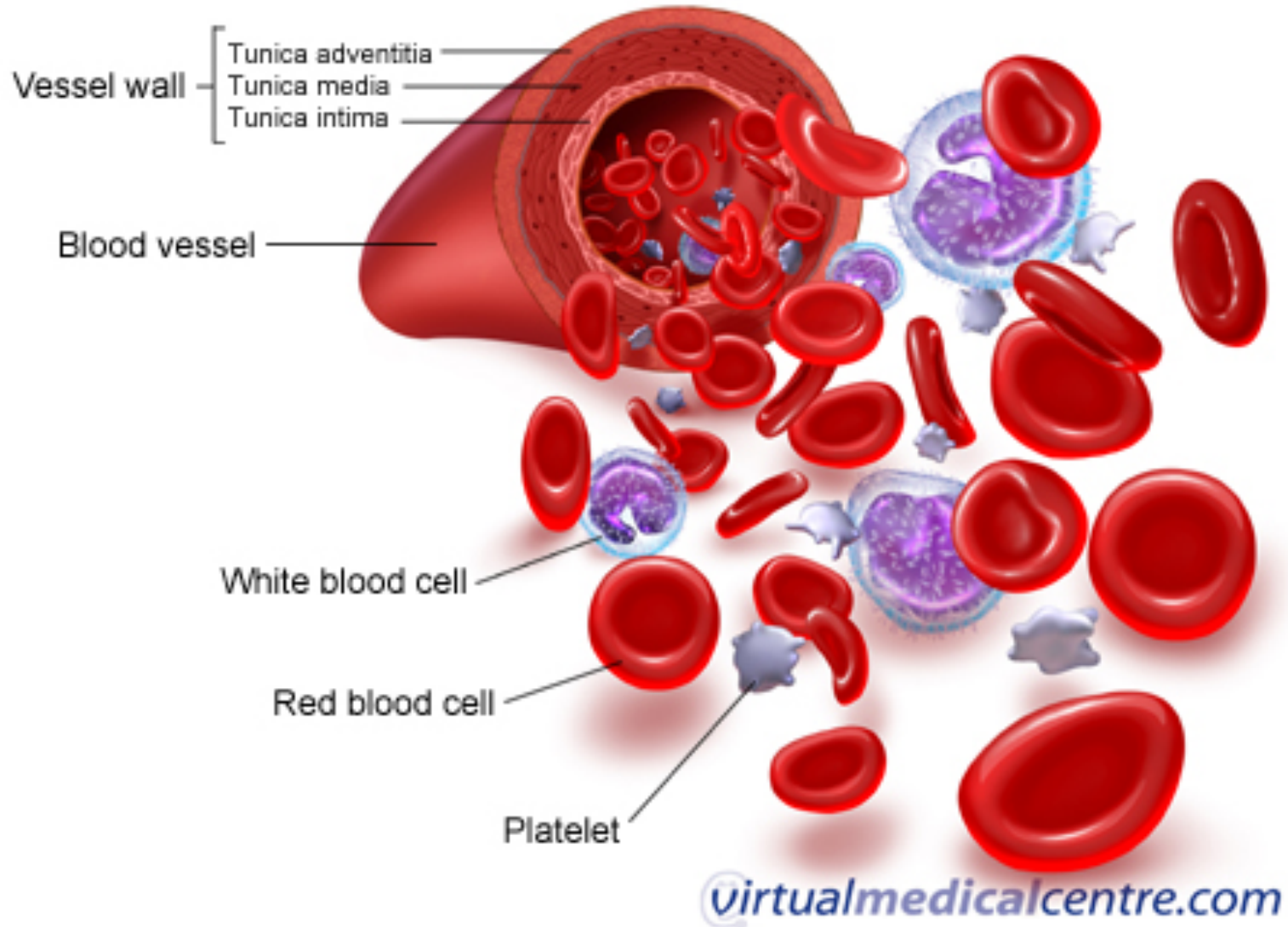


Buffy Coat

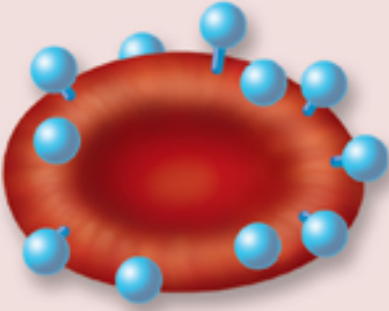
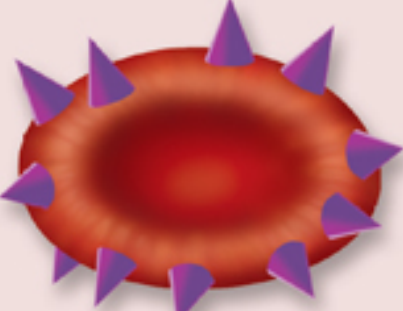
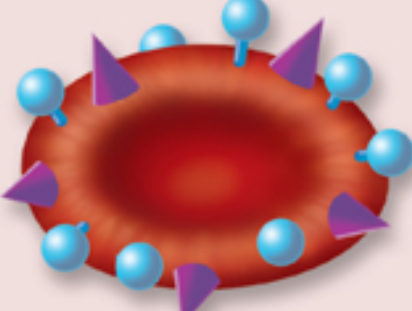




Erythrocytes
(red blood cells 45%)

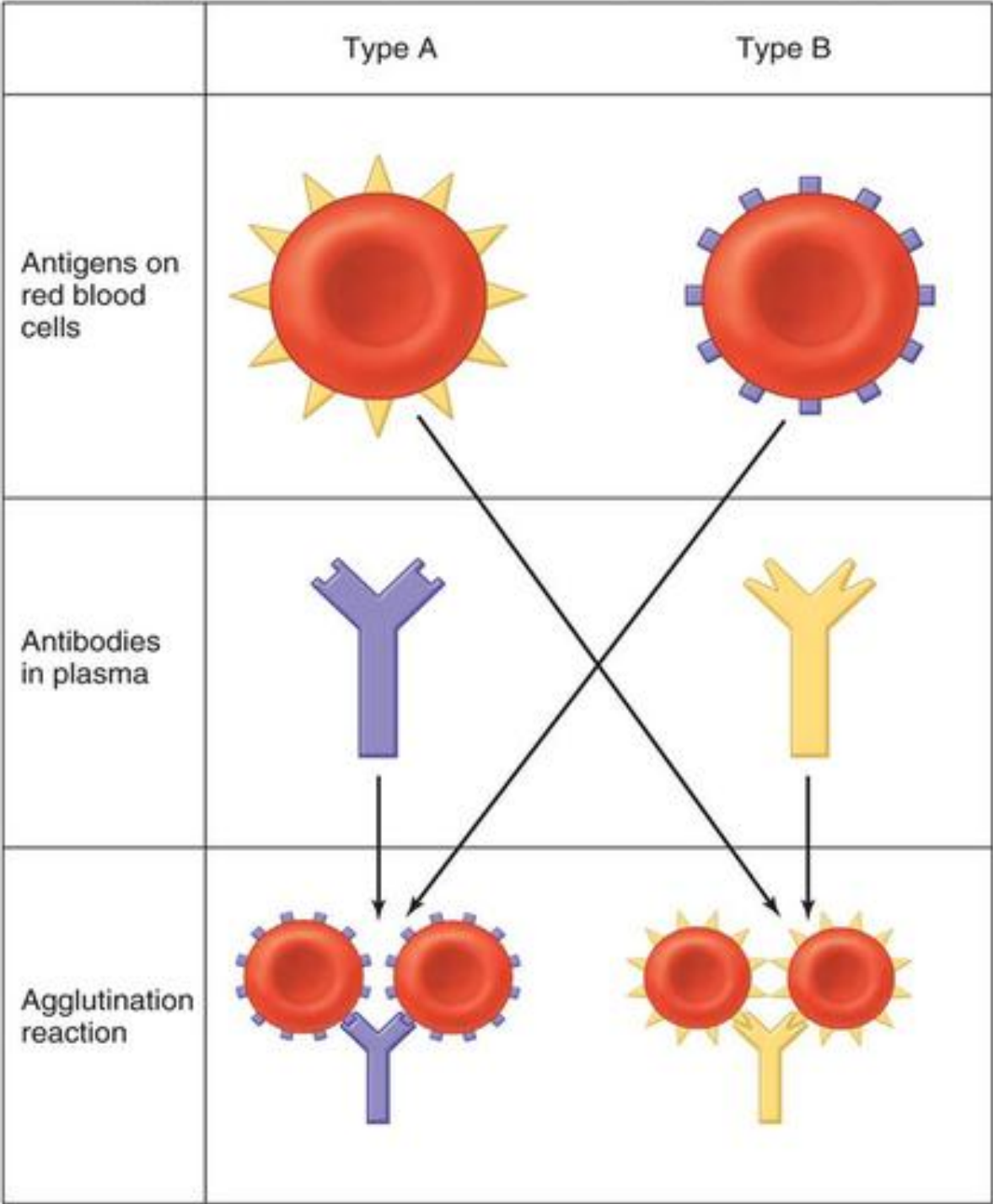
Blood Sample after Centrifugation

Blood Cell Structures



ABO Blood Types

	Antigen A	Antigen B	Antigens A and B	Neither antigen A nor B
Erythrocytes				
Plasma	Anti-B antibodies 	Anti-A antibodies 	Neither anti-A nor anti-B antibodies	Both anti-A and anti-B antibodies 
Blood type	Type A Erythrocytes with type A surface antigens and plasma with anti-B antibodies	Type B Erythrocytes with type B surface antigens and plasma with anti-A antibodies	Type AB Erythrocytes with both type A and type B surface antigens, and plasma with neither anti-A nor anti-B antibodies	Type O Erythrocytes with neither type A nor type B surface antigens, but plasma with both anti-A and anti-B antibodies





Neutrophils



Eosinophils



Basophils



Lymphocytes



Monocytes



Platelets



Erythrocytes

Types of Leukocytes

