

---

---

---

---

---

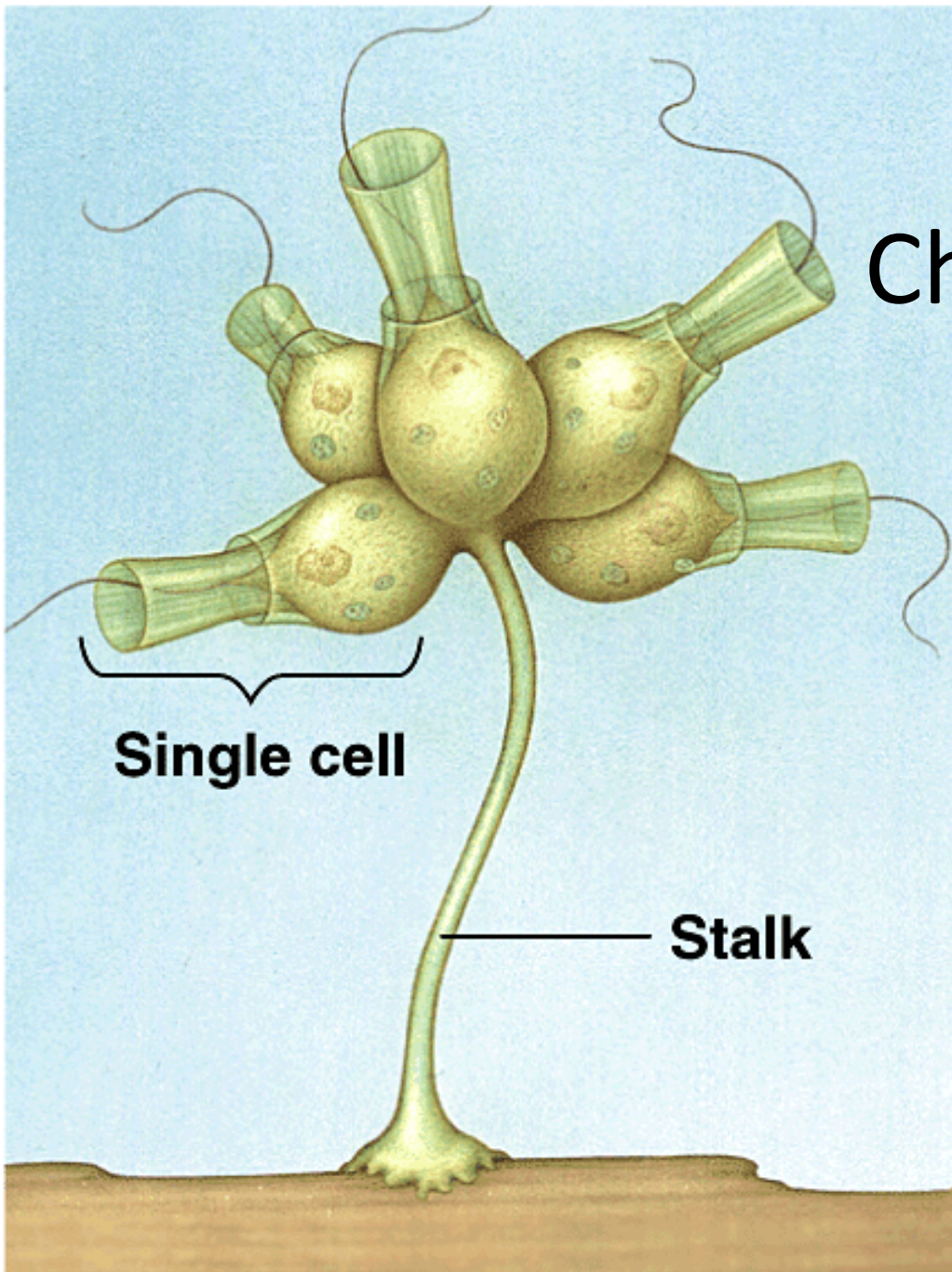
---

---

---

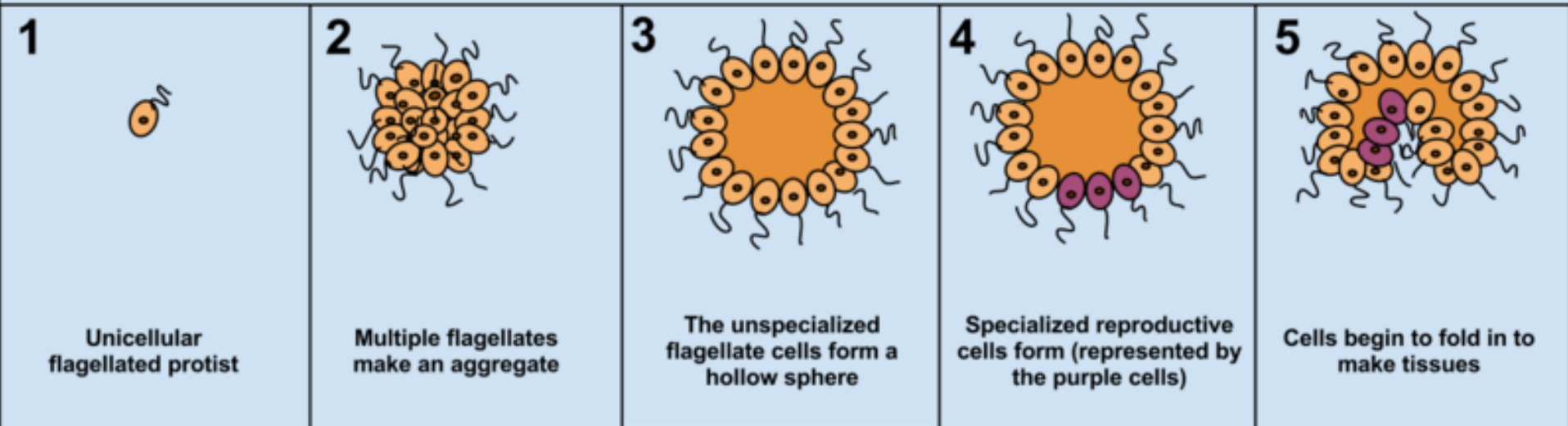
9/4/94

# Ancestral Choanoflagellate



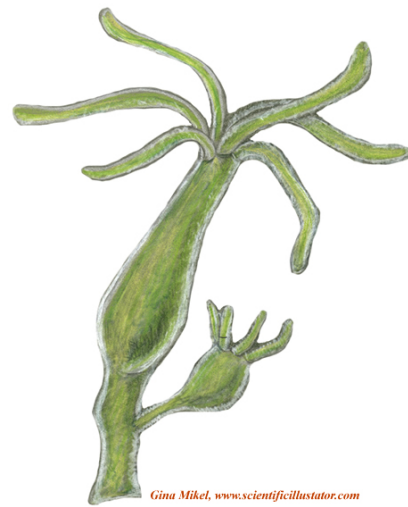


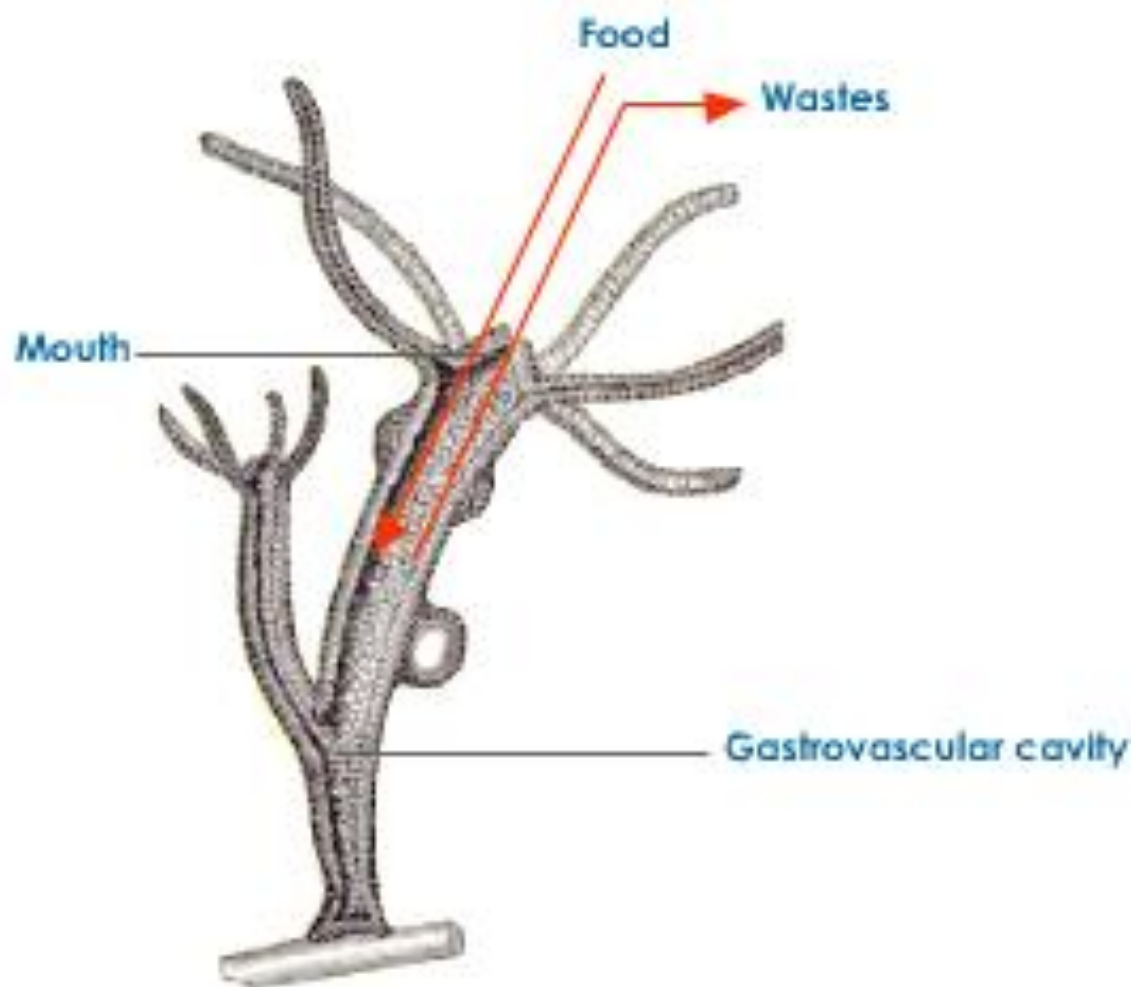
## Colonial Flagellate Hypothesis

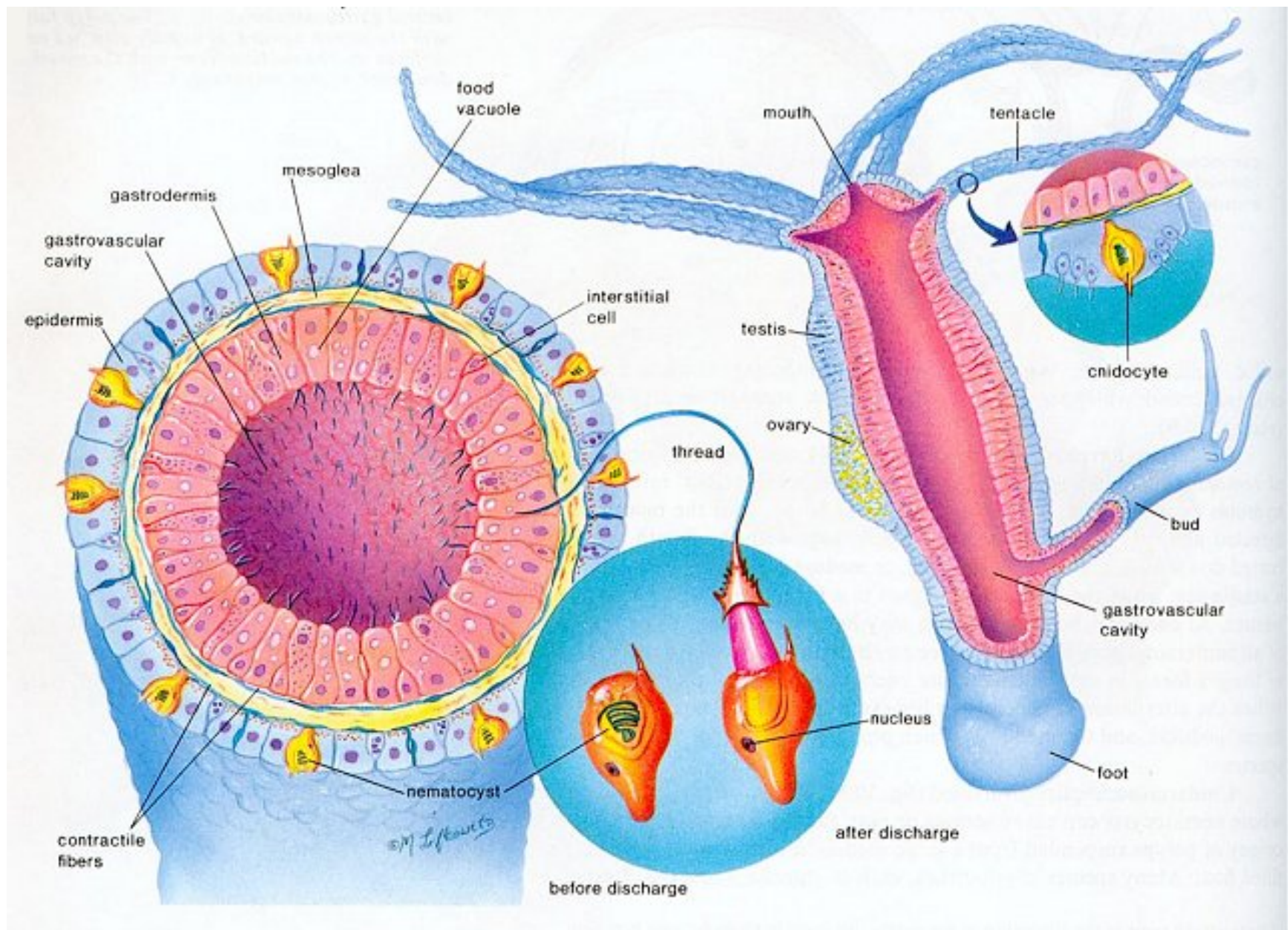


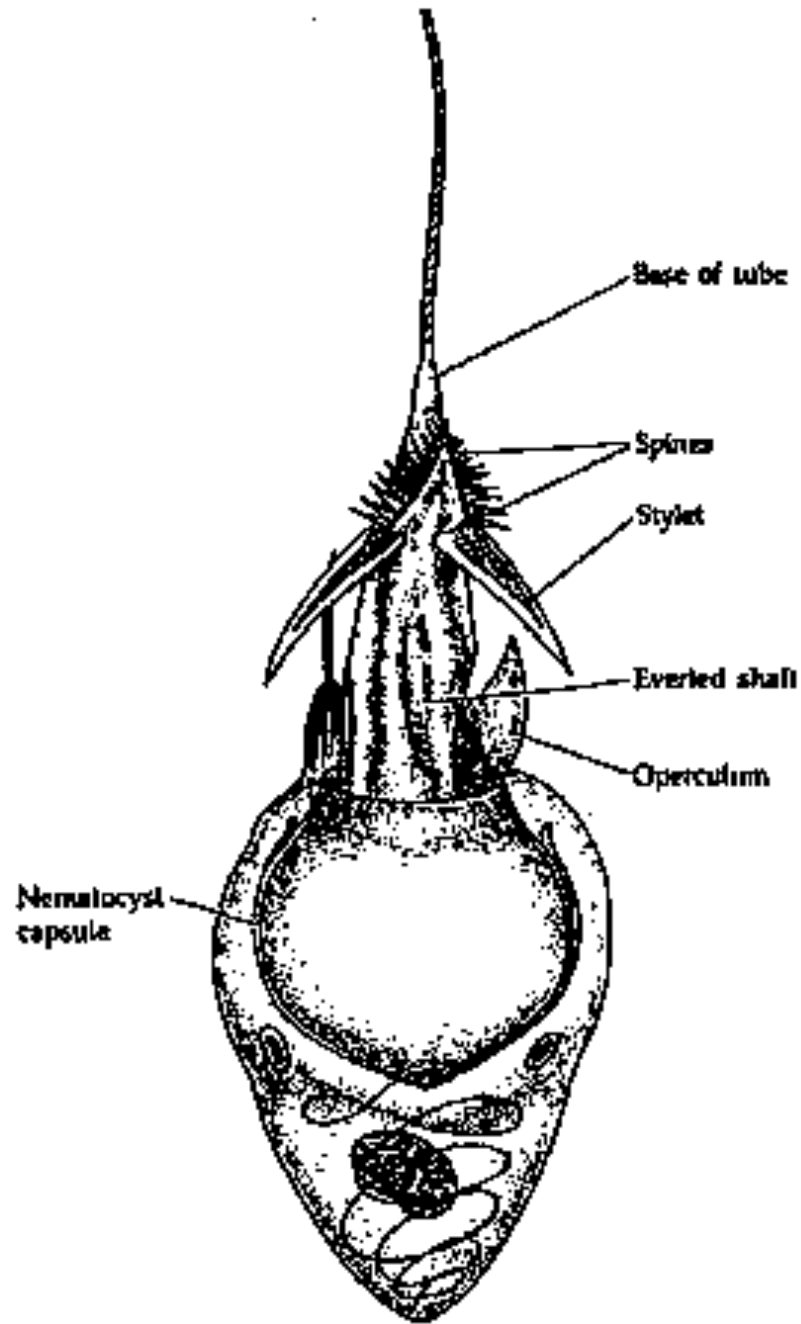


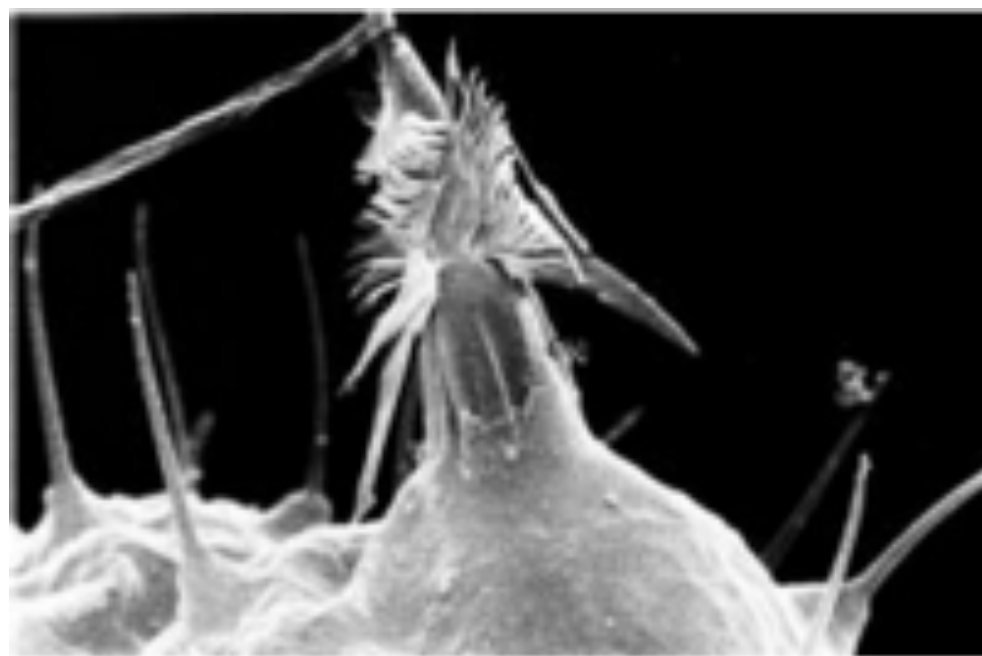




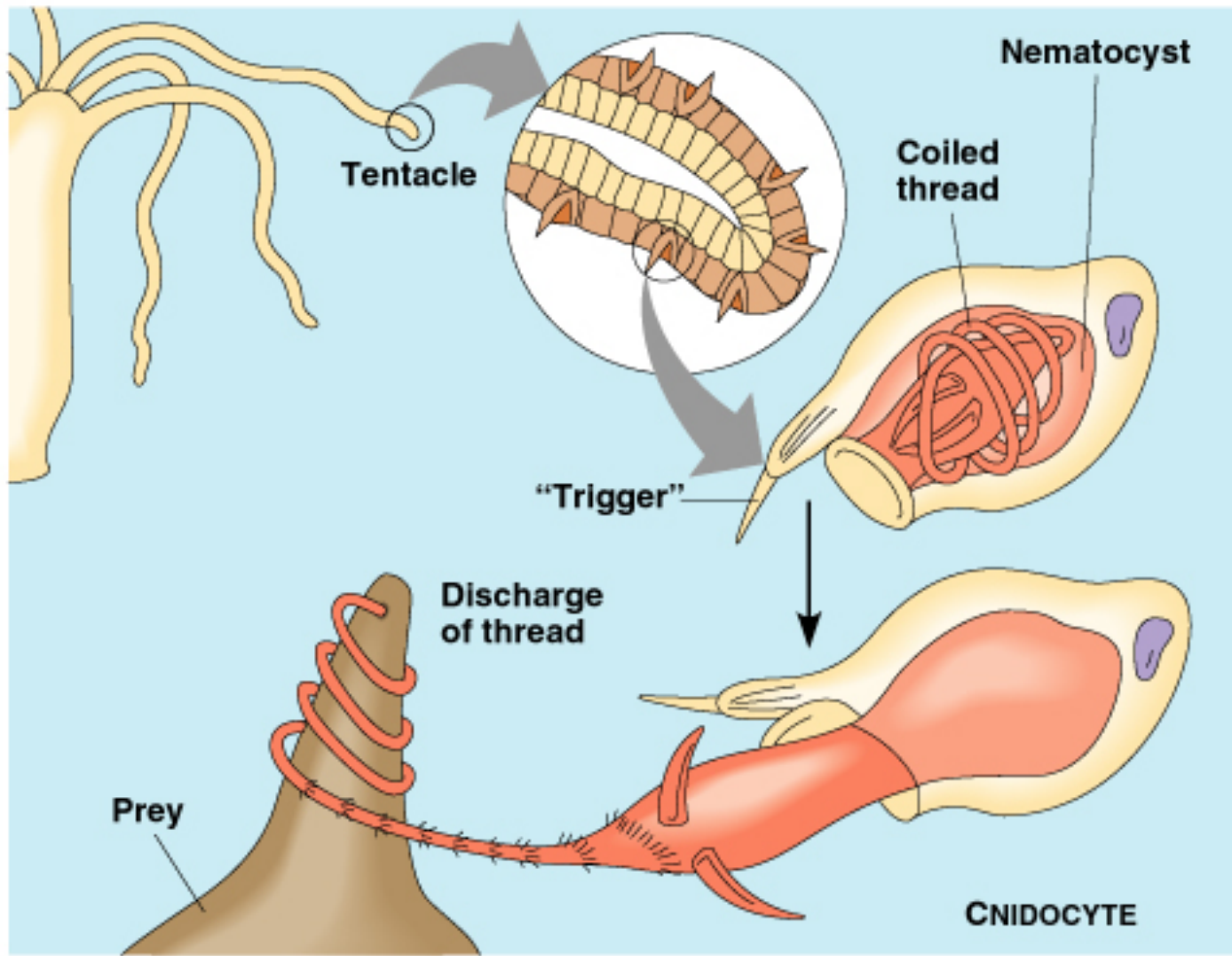


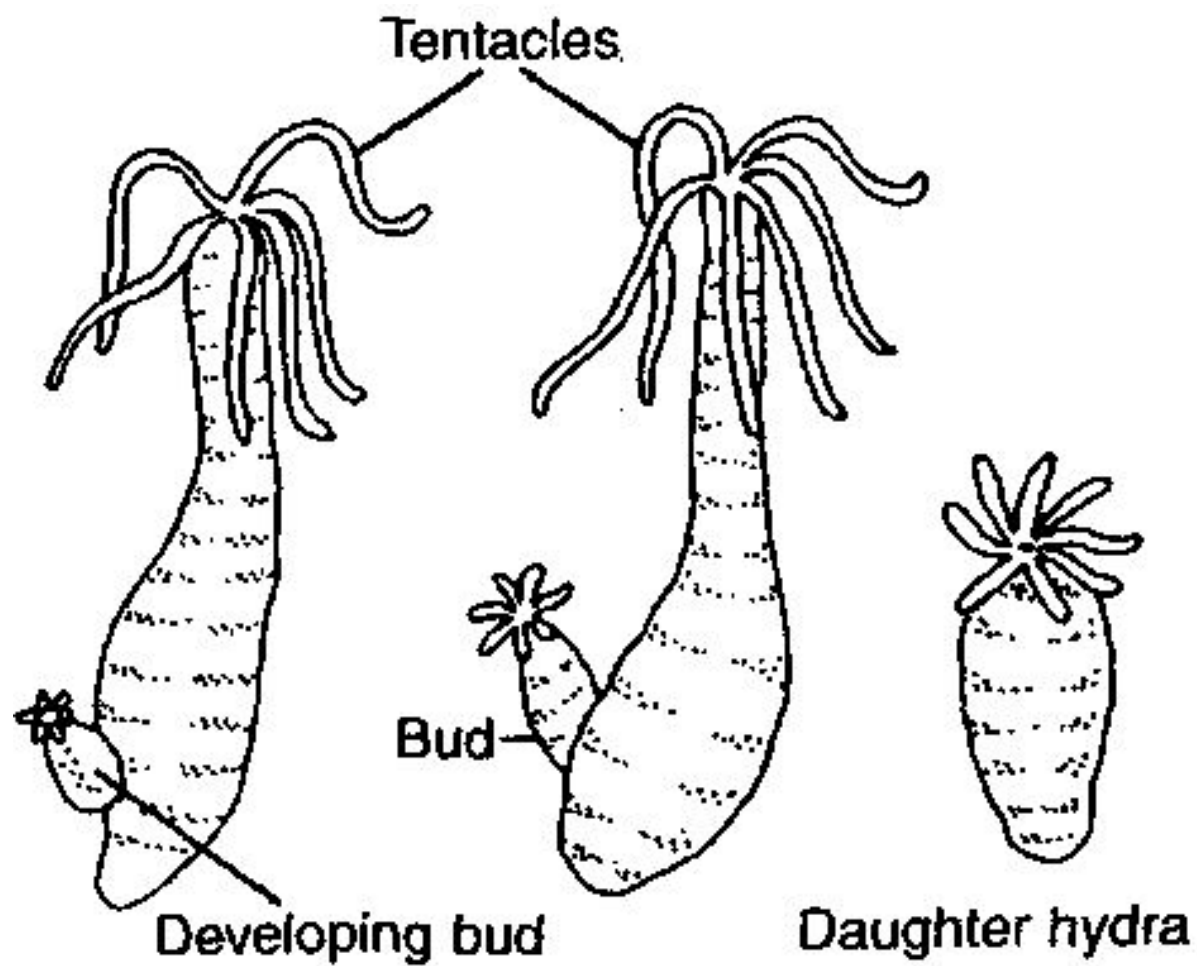






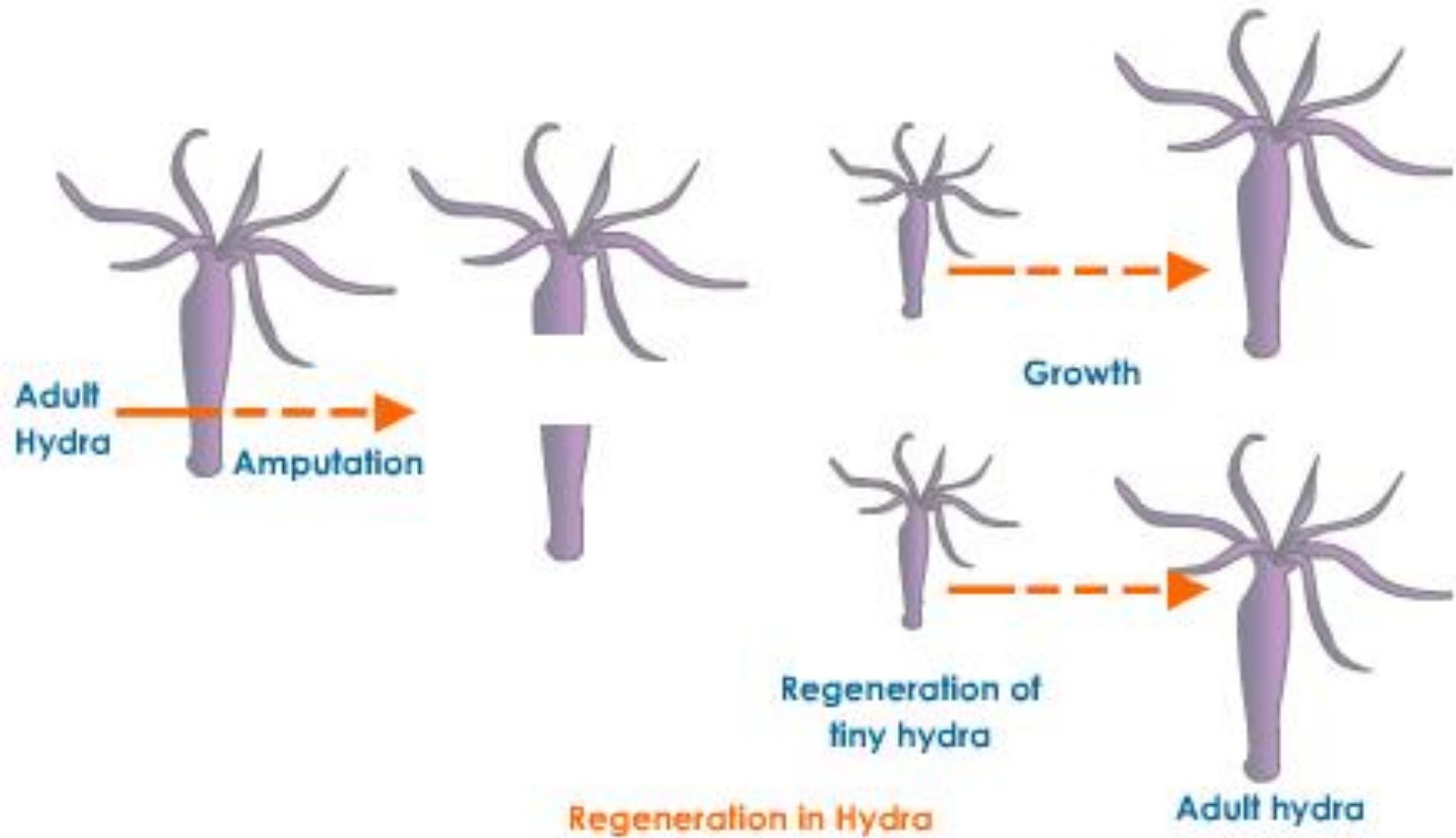


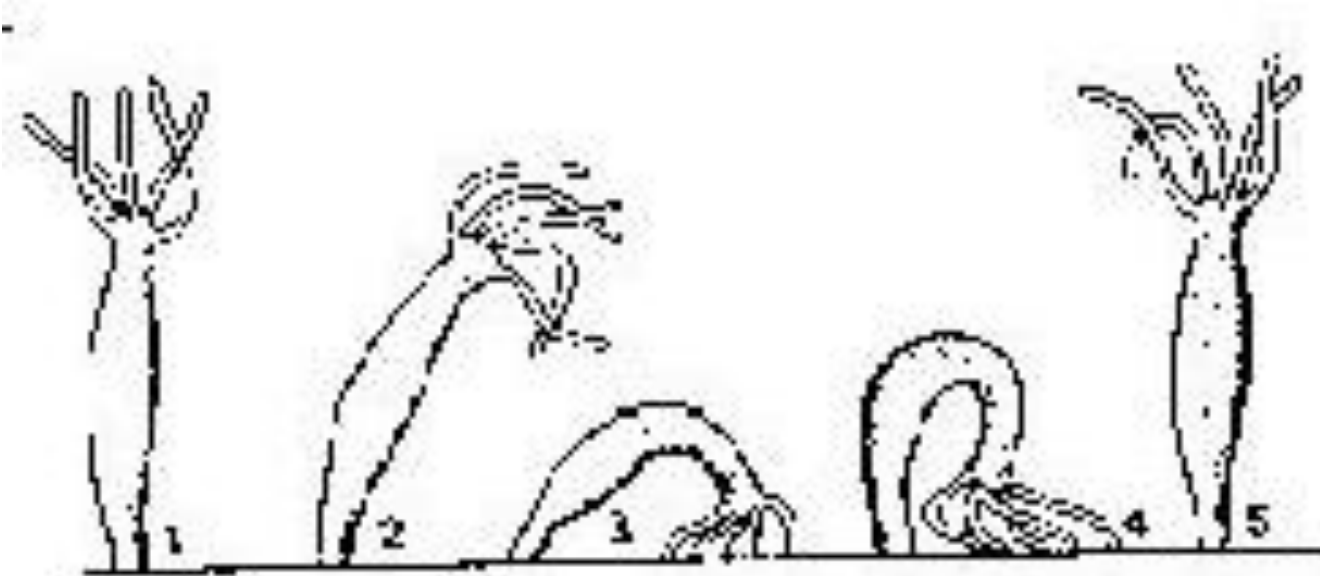


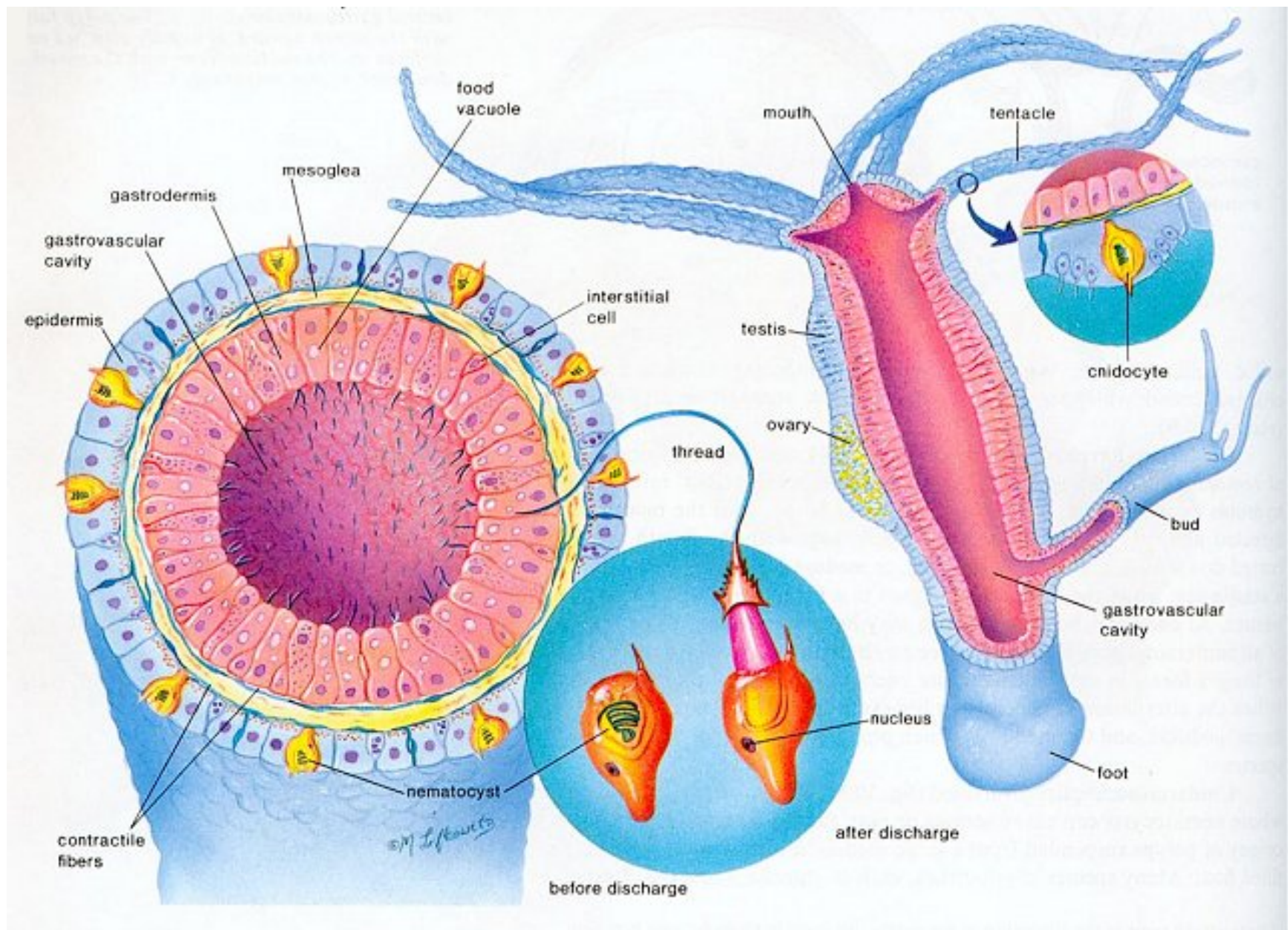


***Budding in Hydra.***



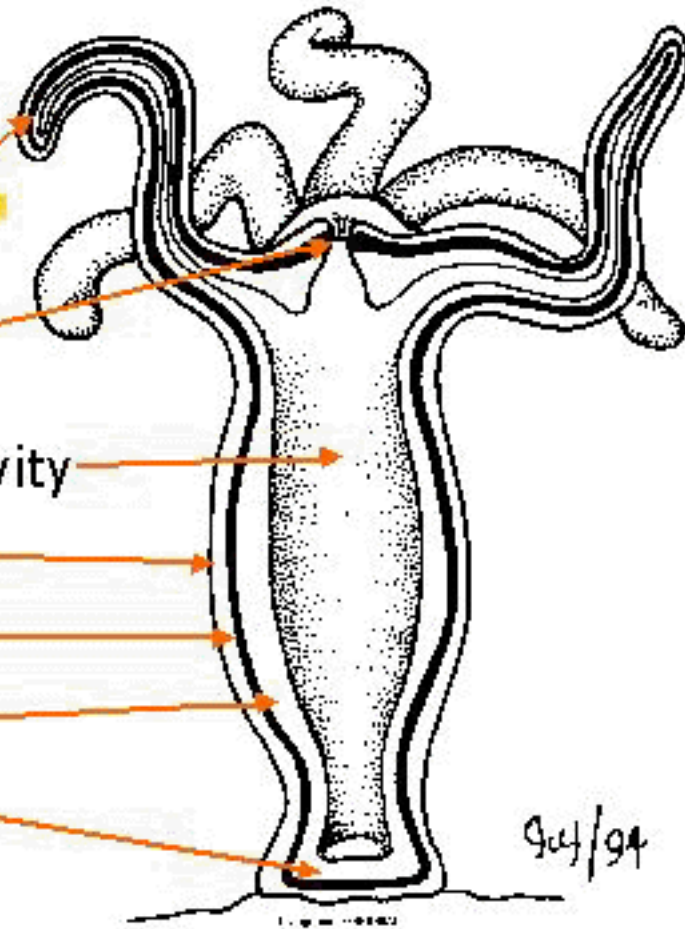


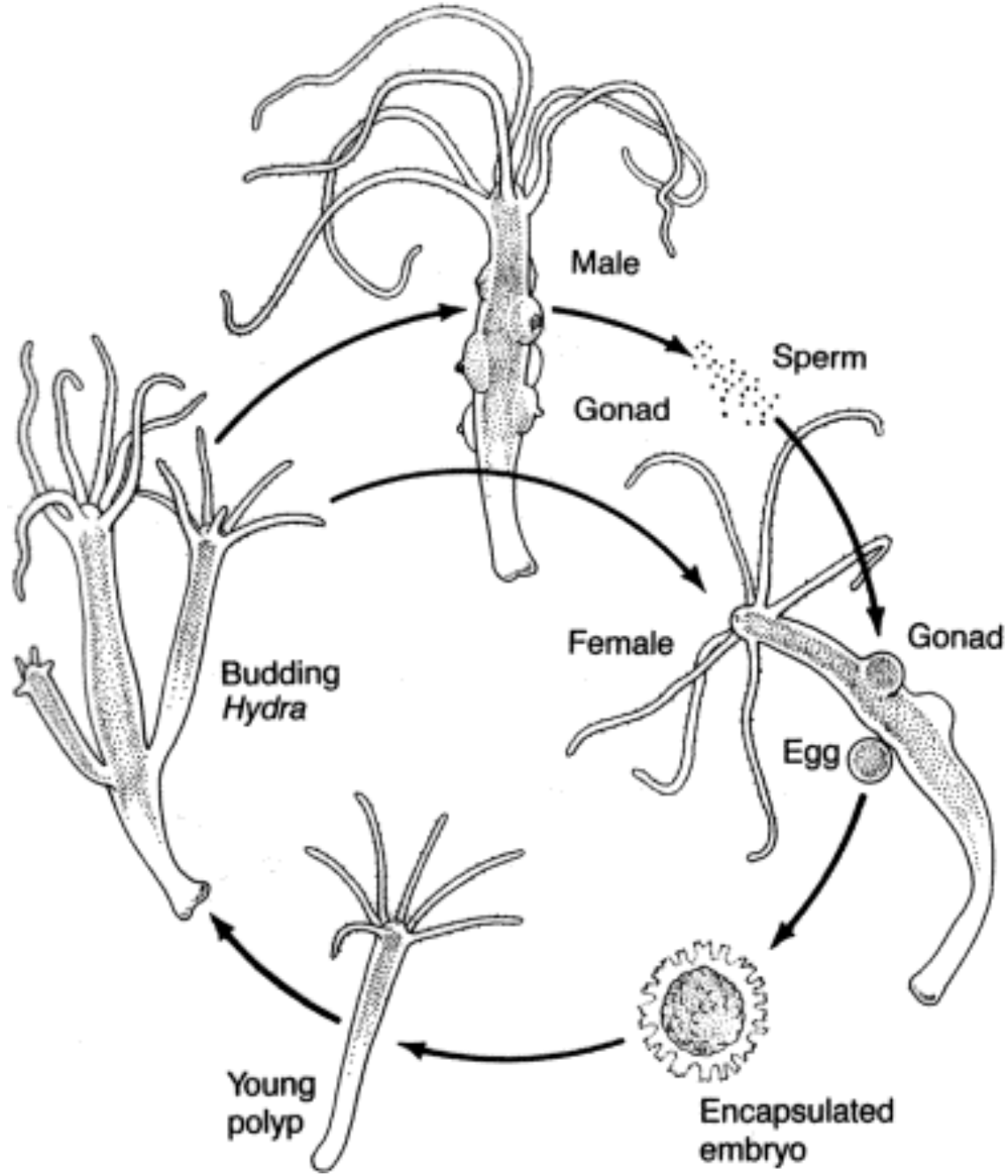




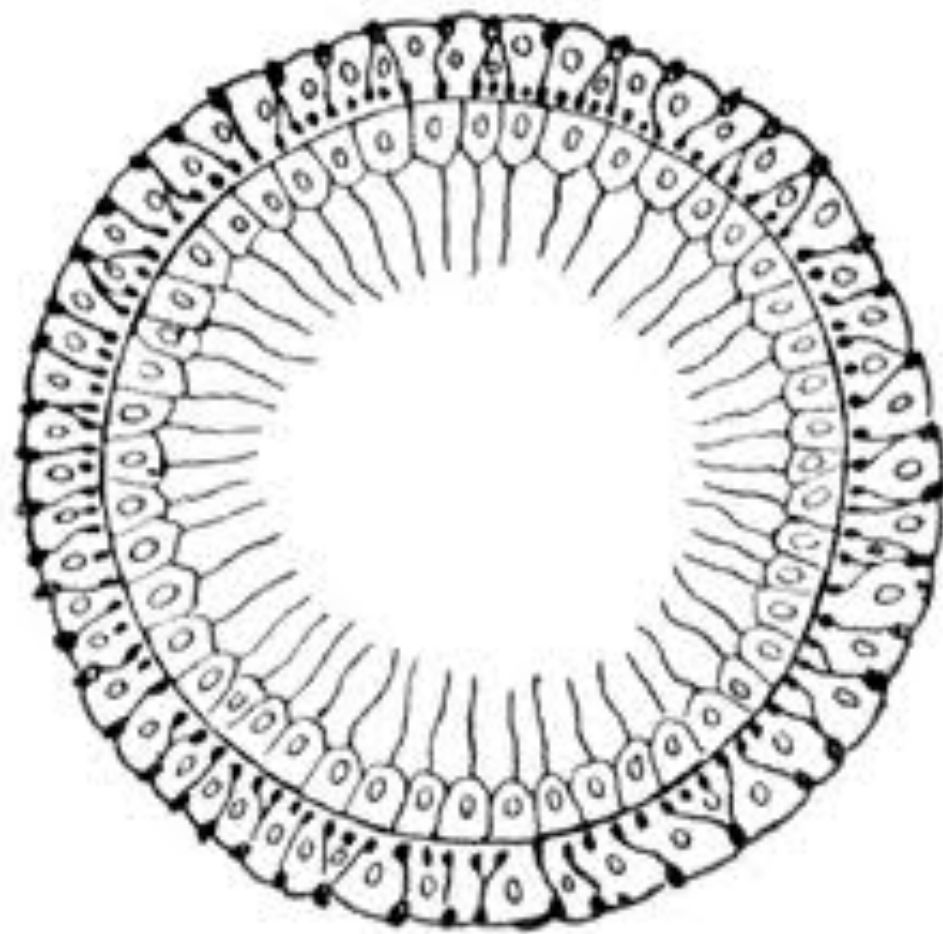
# **Hydra**

- tentacles
- mouth
- gastrovascular cavity
- epidermis
- mesoglea
- gastrodermis
- basal disk

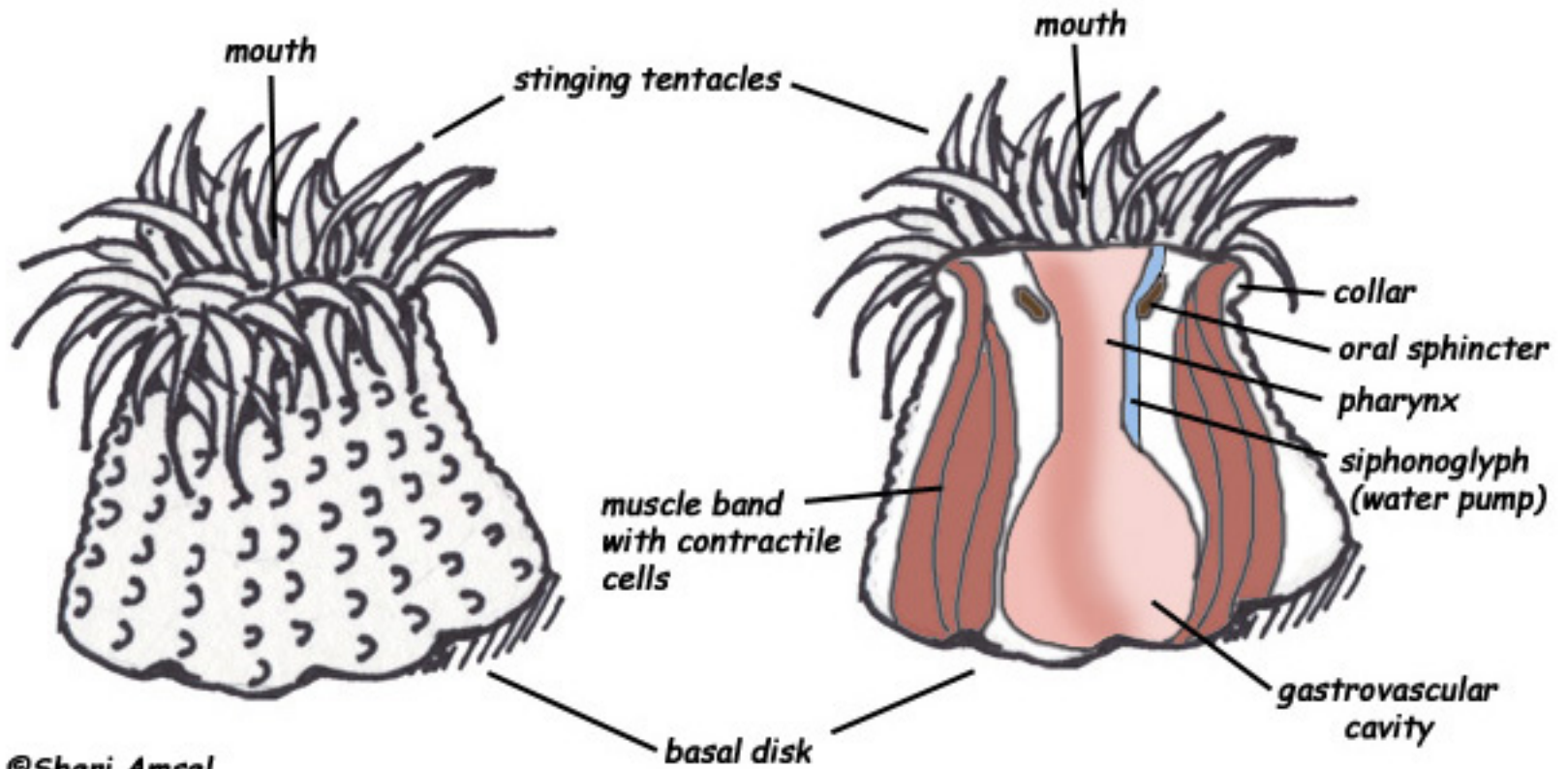








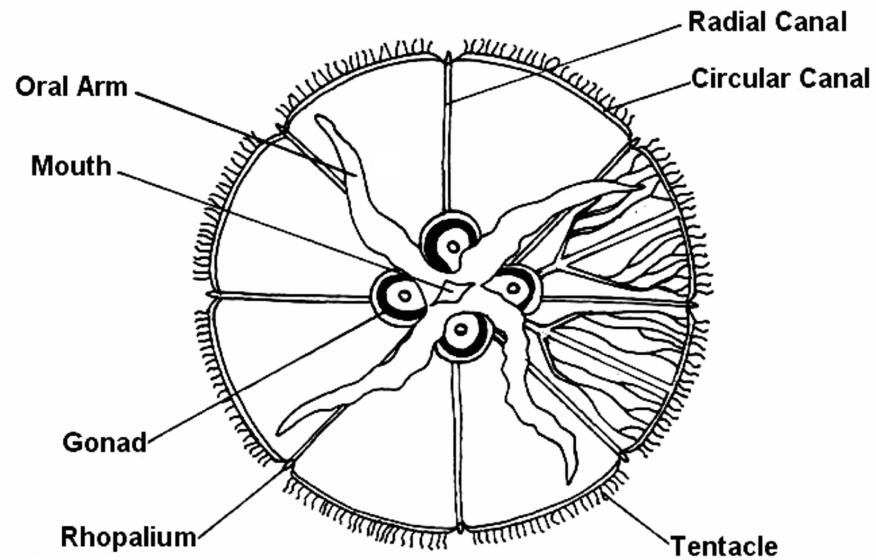
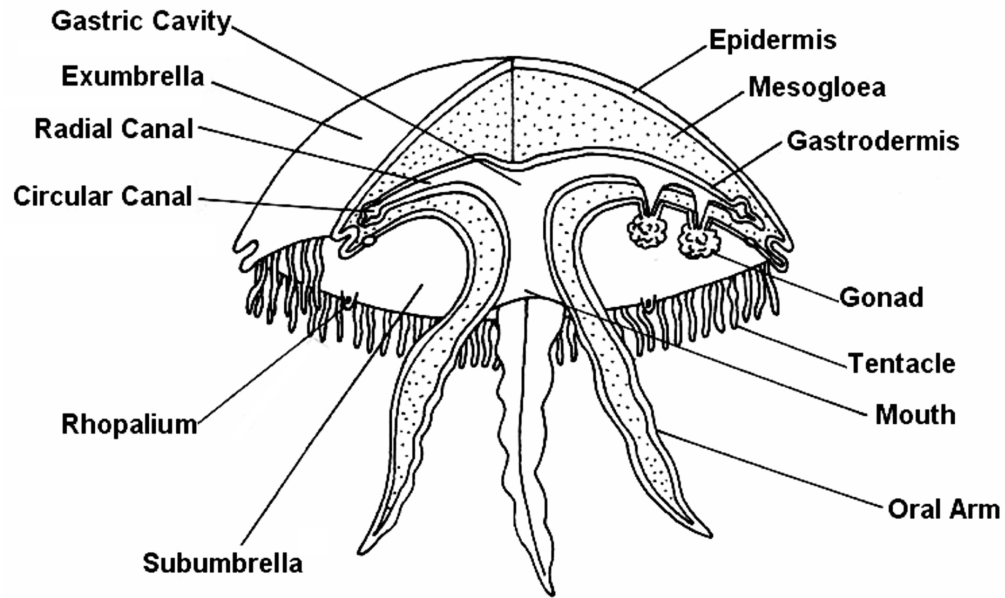
**Anemone (Giant Green)**  
*Anthopleura xanthogrammica*

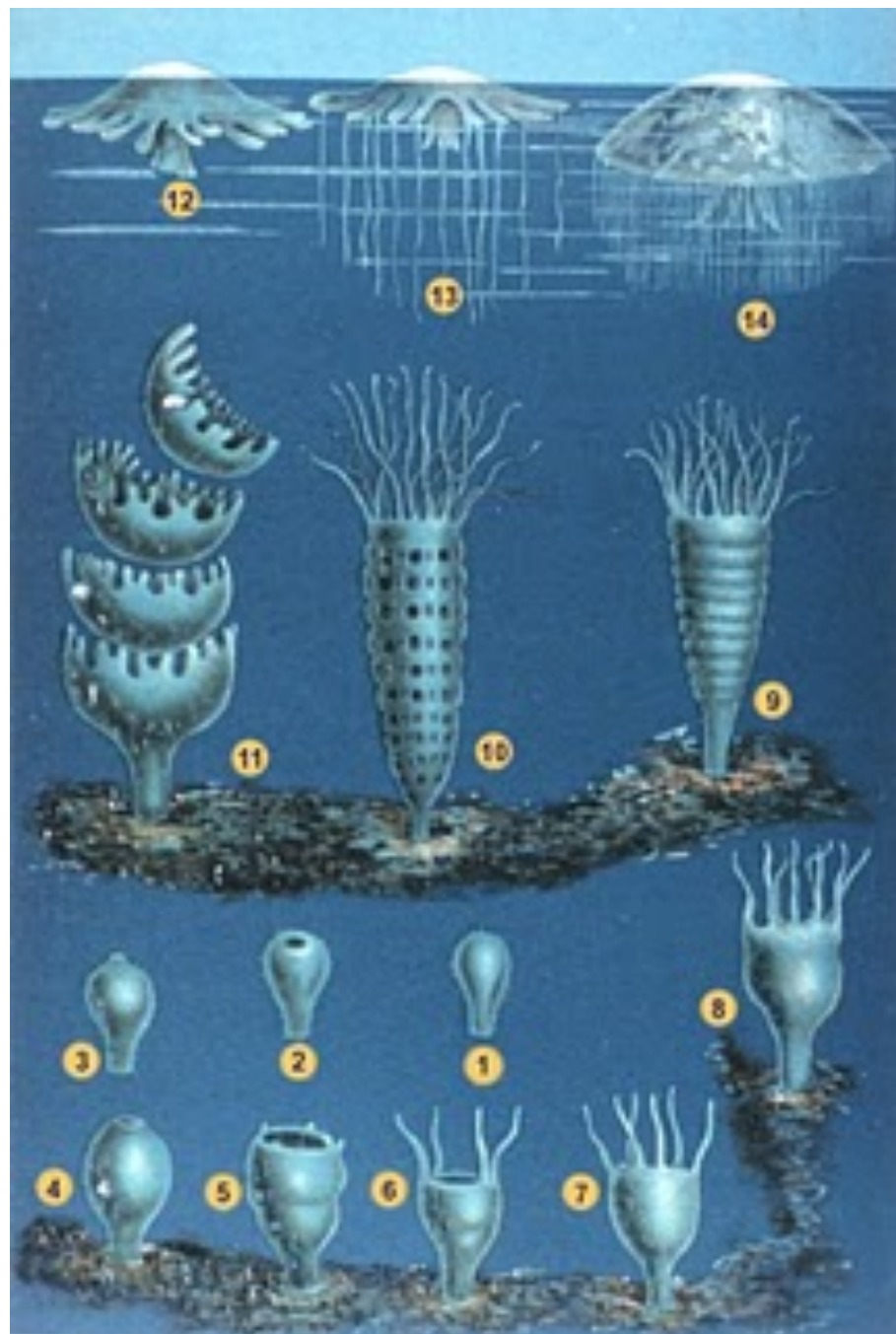


©Sheri Amsel



**Phylum: Cnidaria**  
***Aurelia* (Moon Jellyfish)**



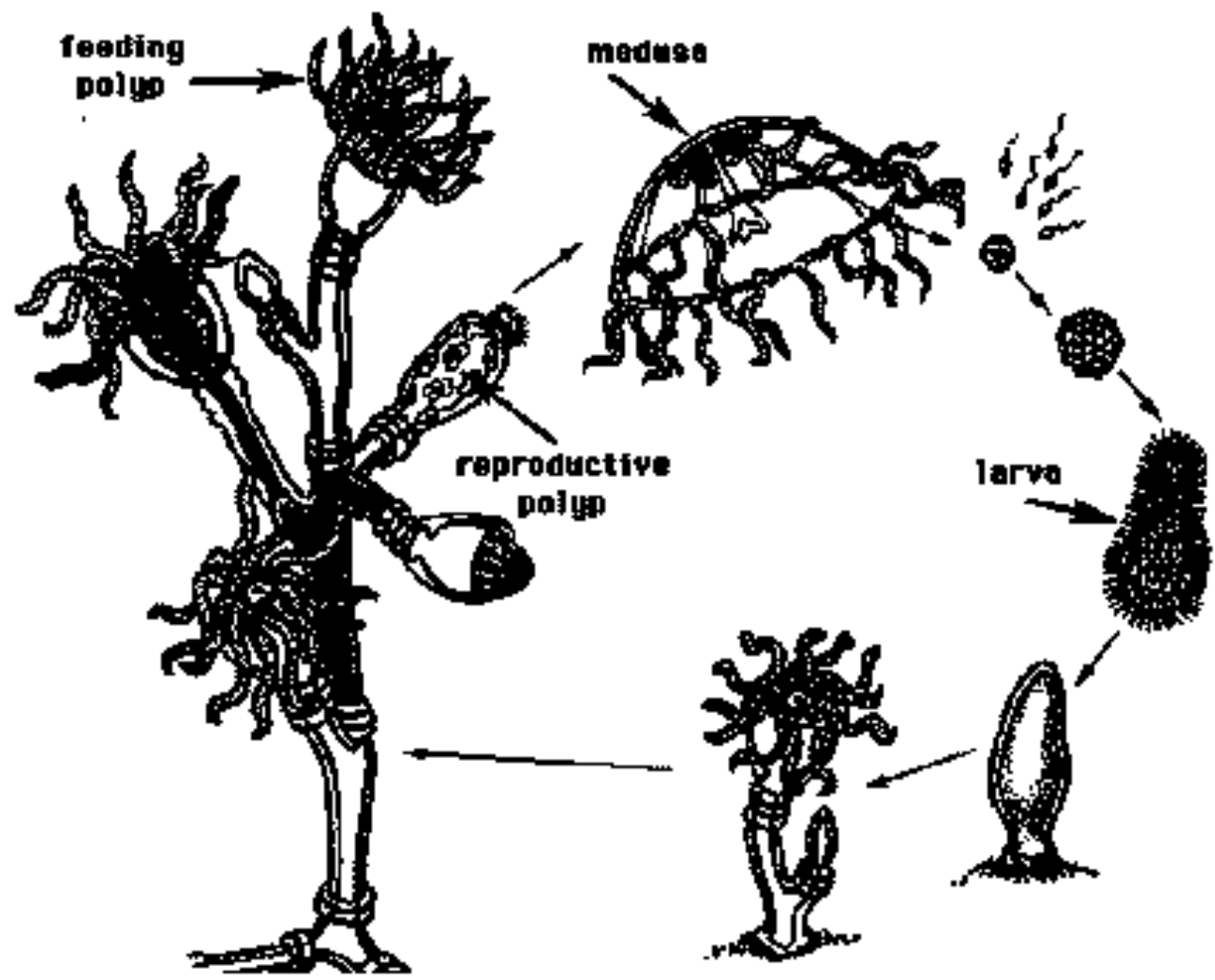






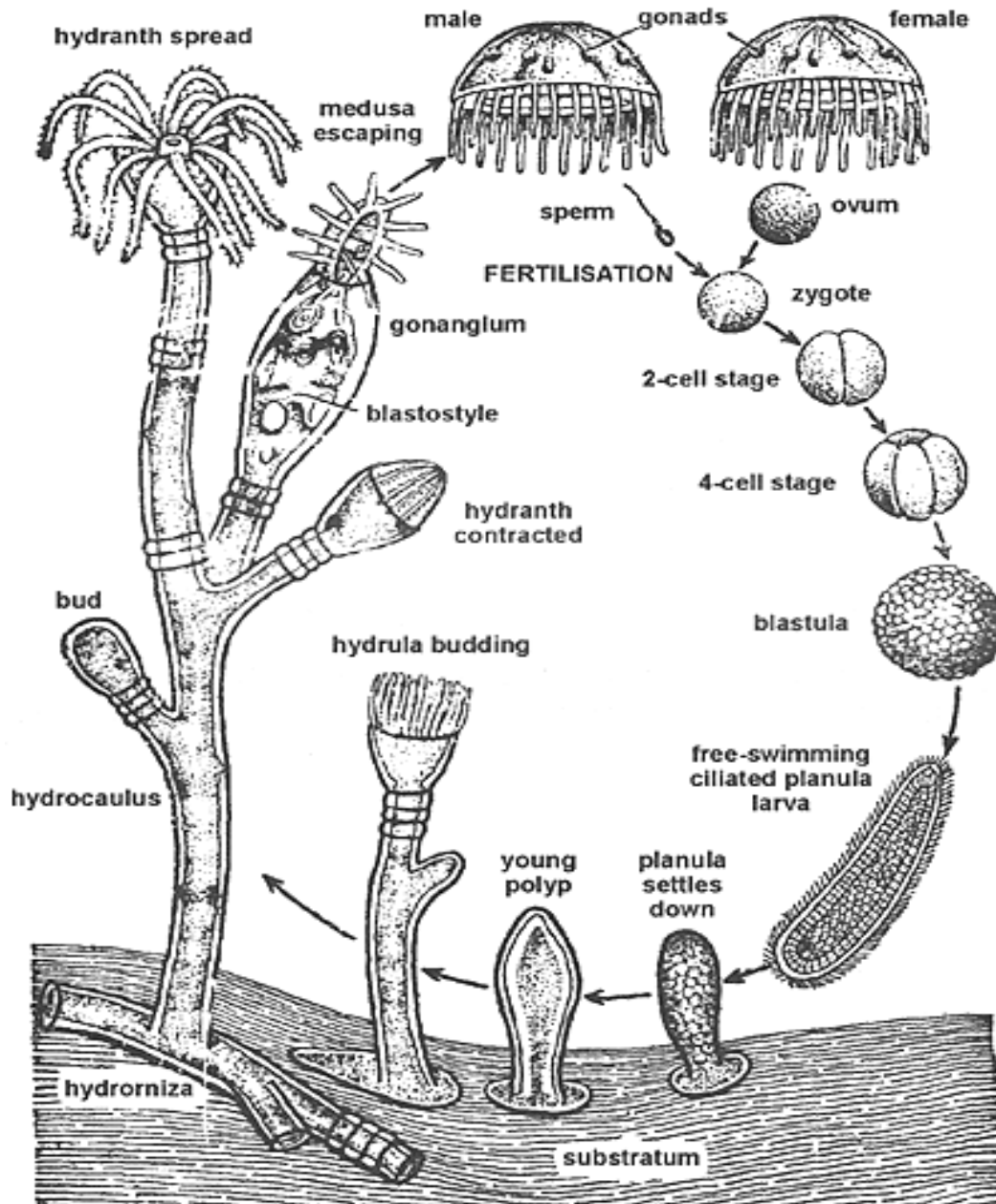






**Asexual stage  
Sessile Colony**

**Sexual stage  
Free-swimming medusa**



Stages in the life cycle of *Obelia* showing metagenesis.

# Phylum Platyhelminthes

*Flatworms*



Body flattened



Zubi 05





**Planeria**



**Schistosoma**

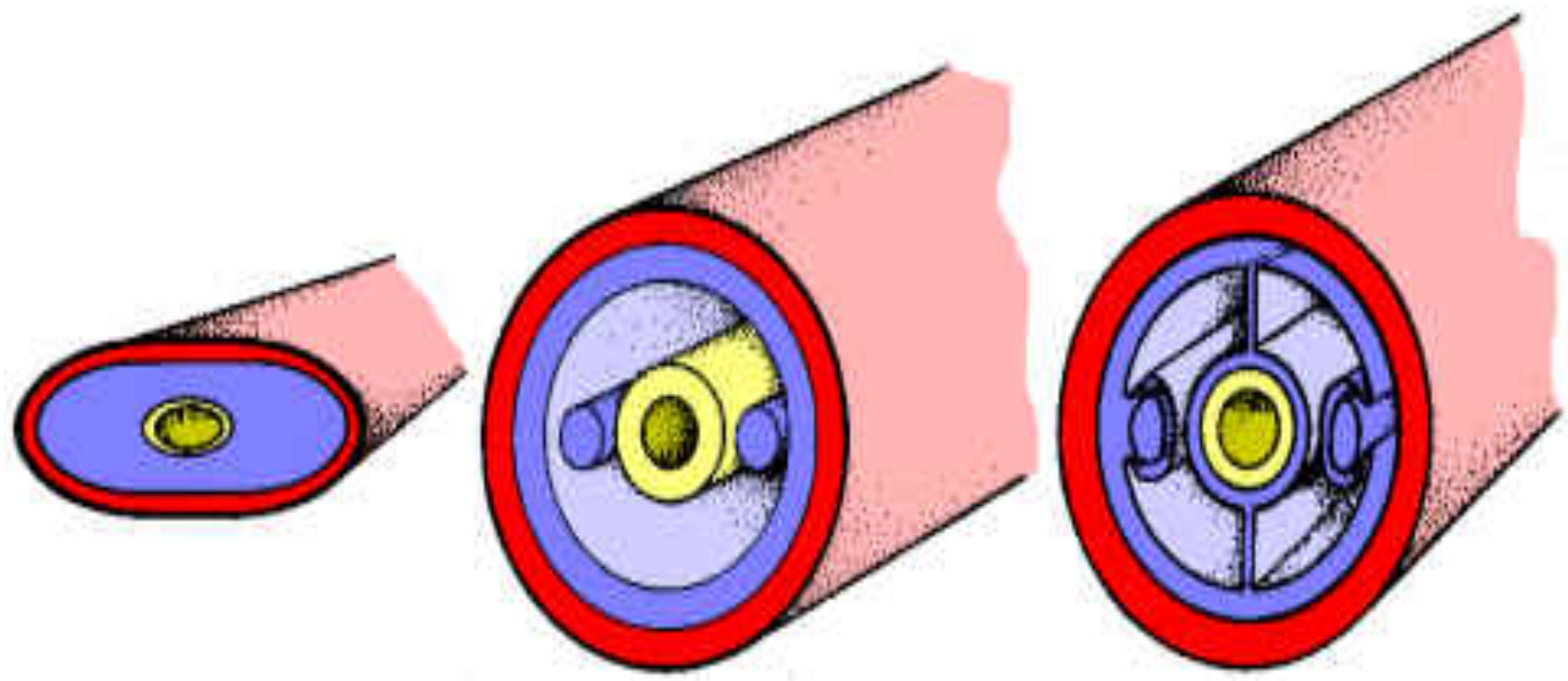


**Fasciola**



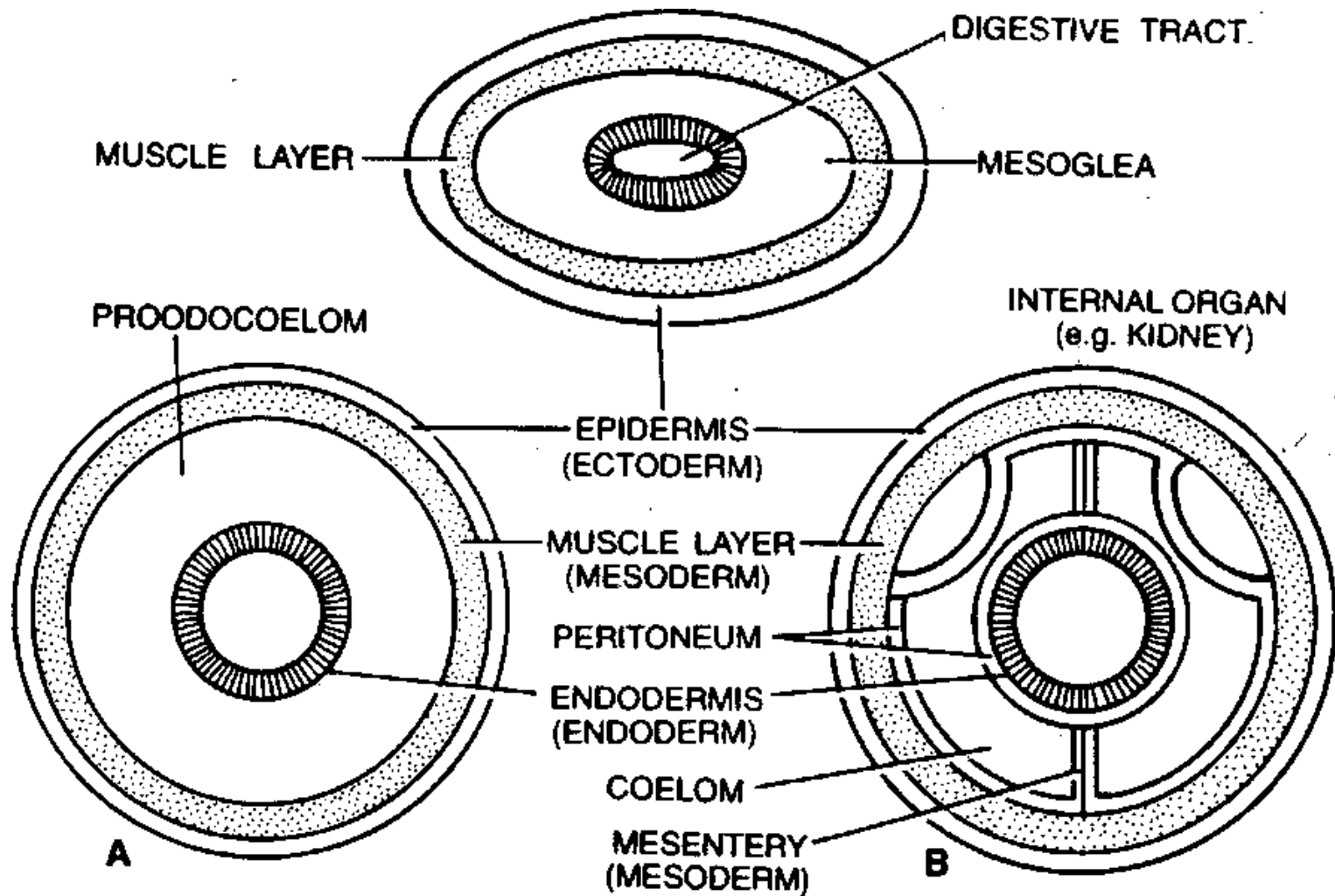
**Taenia Solium**





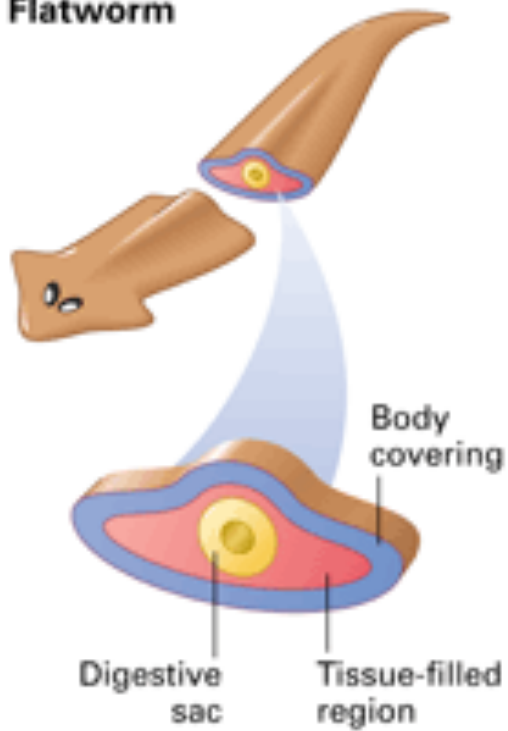
9/4/94



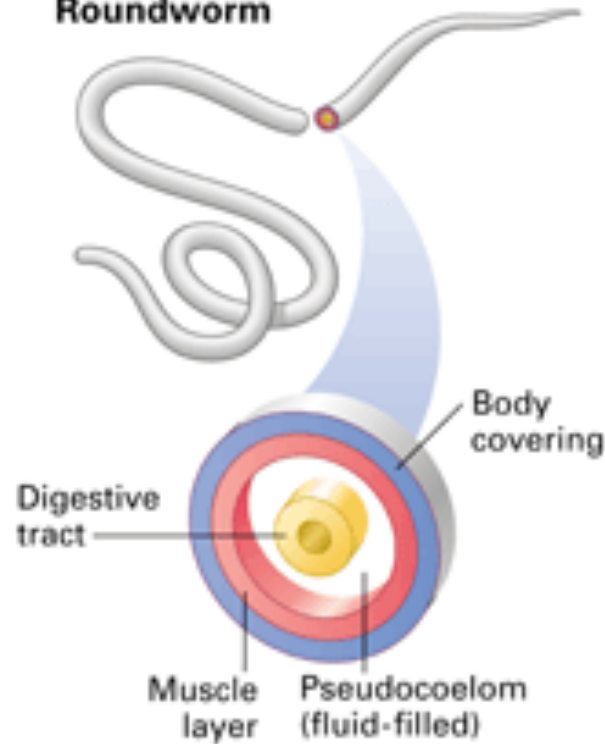


**Fig. 3 : Various types of body organization.**

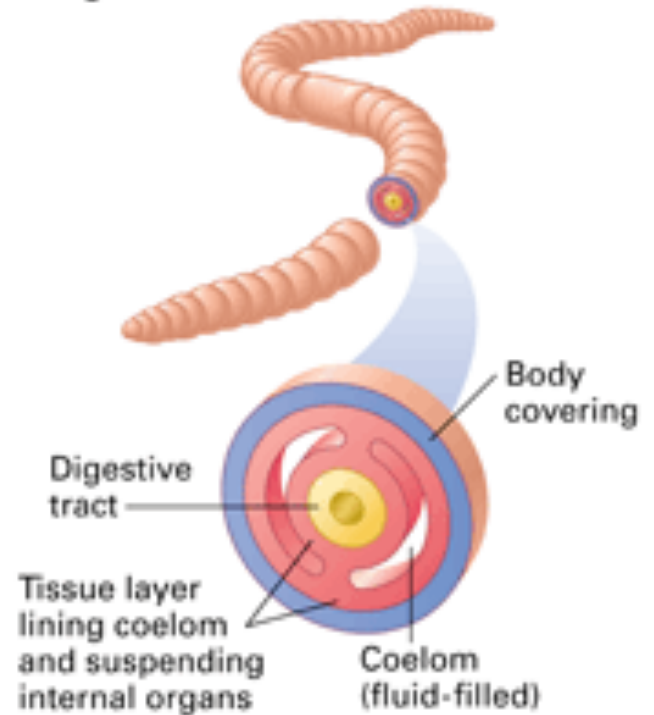
**Flatworm**

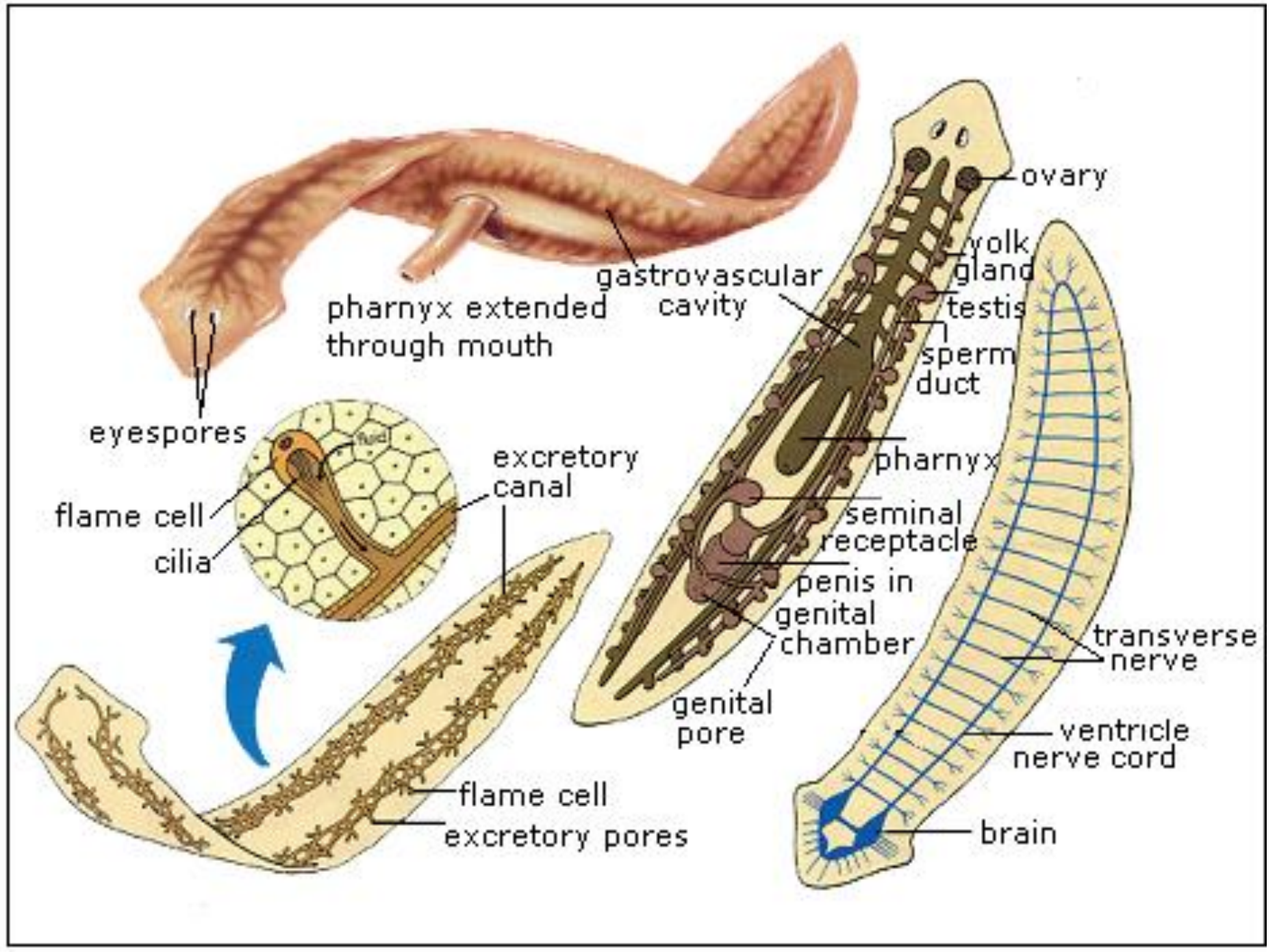


**Roundworm**

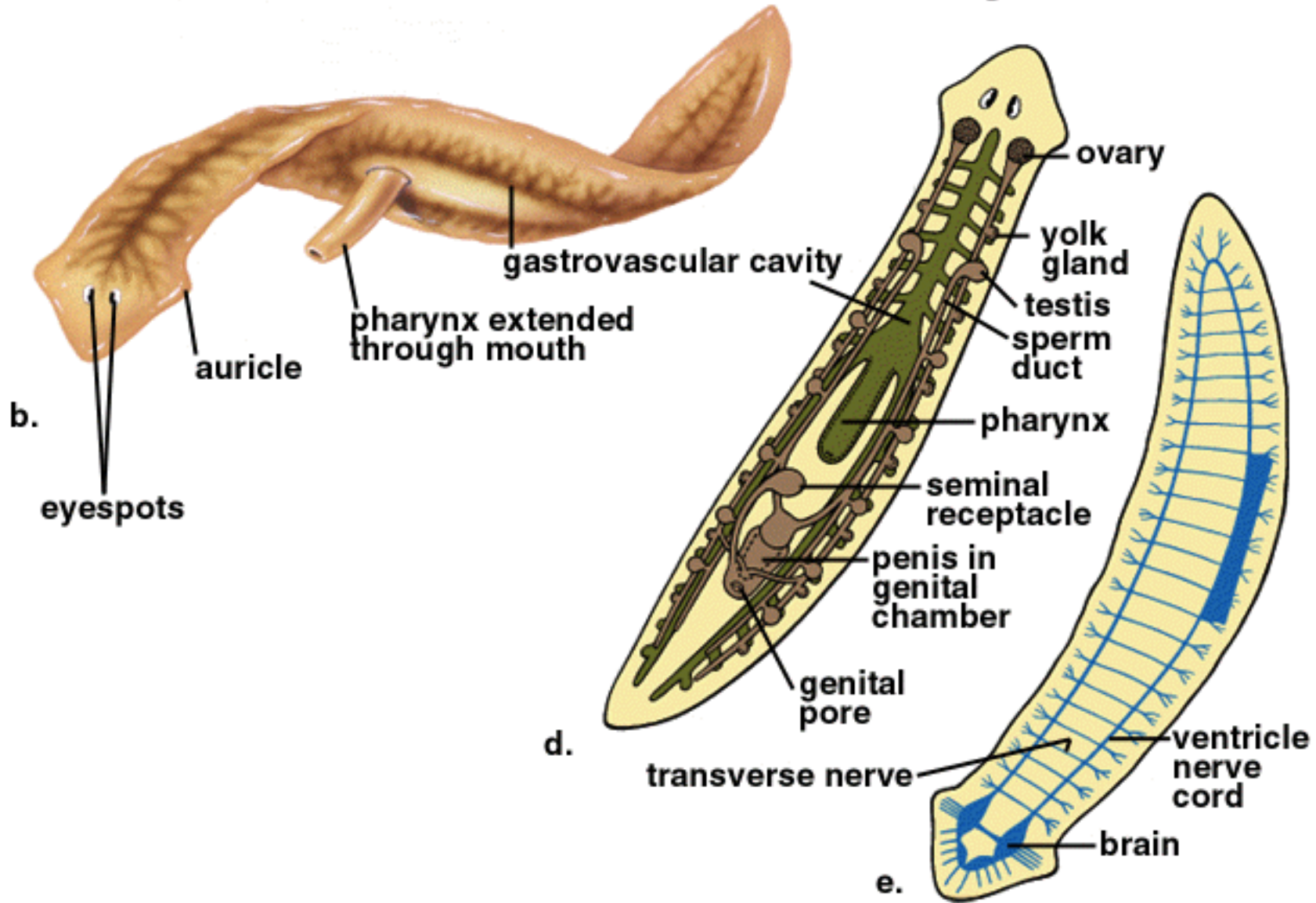


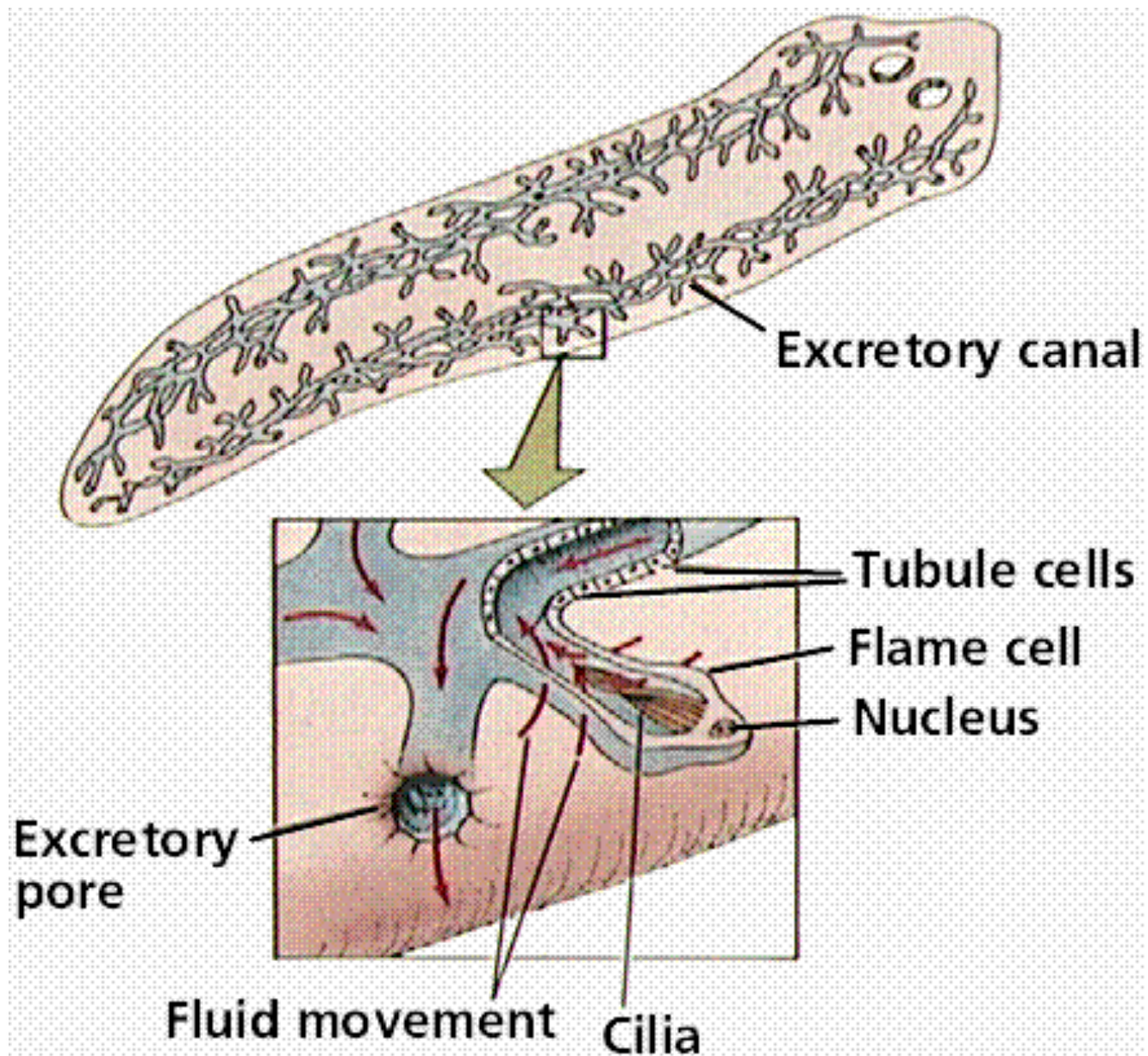
**Segmented worm**

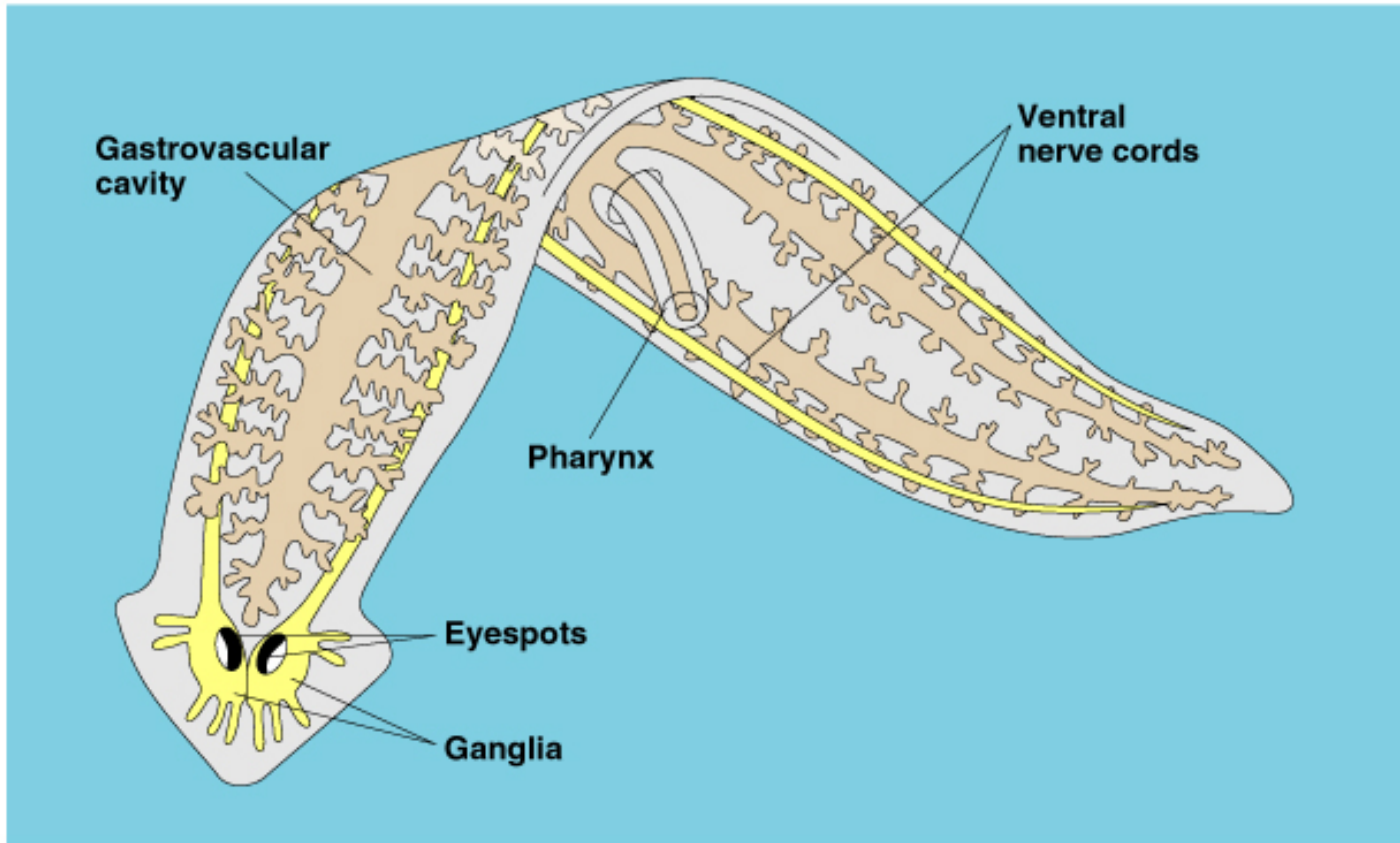


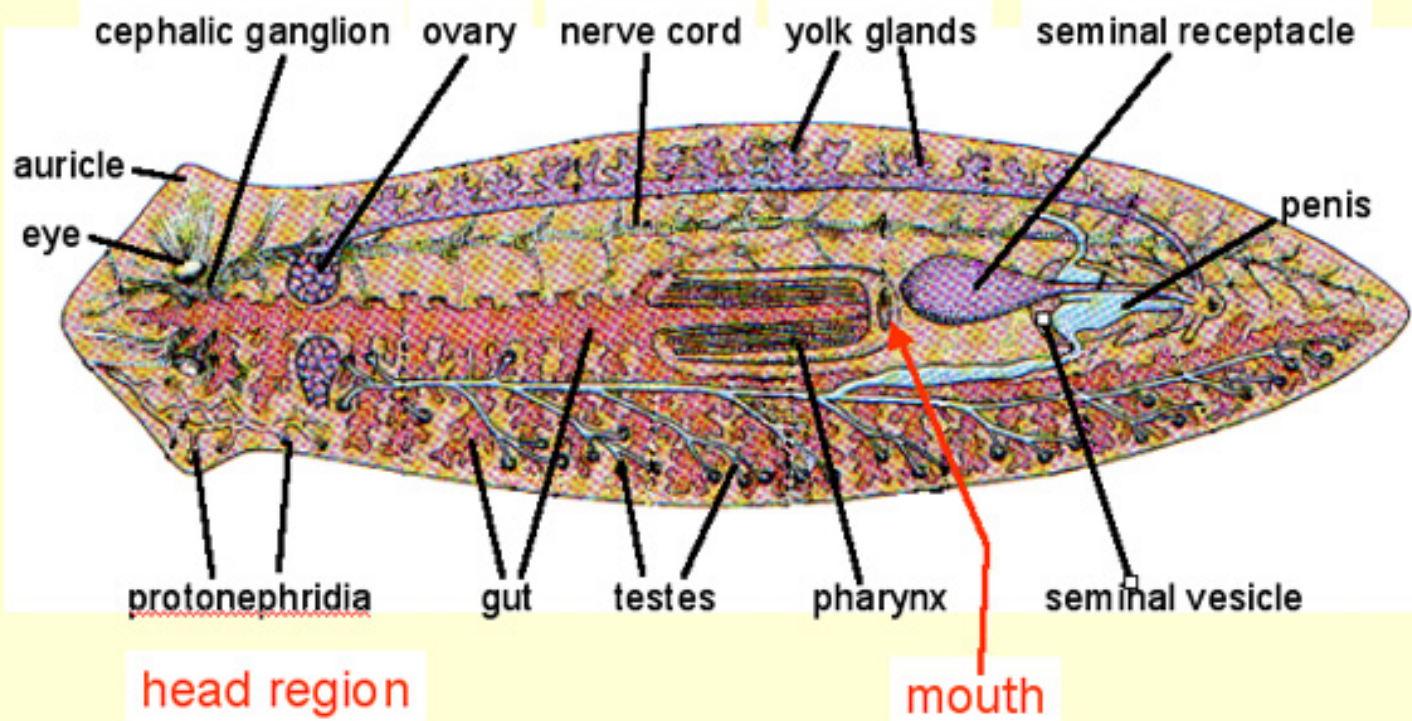


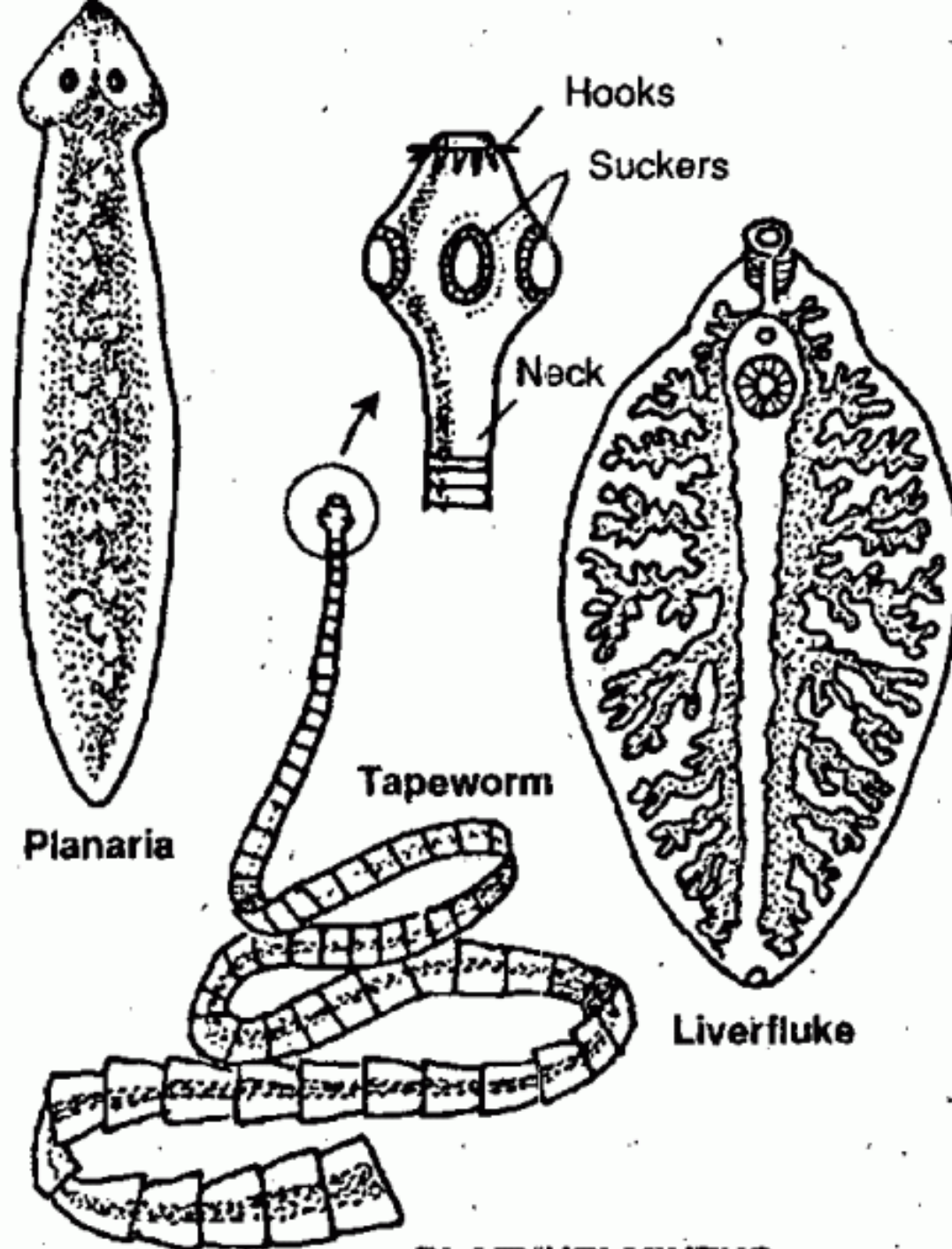
# Planarian anatomy











Planaria

Tapeworm

Liverfluke

PLATYHELMINTHS



# Life cycle of a tapeworm, *Taenia*

