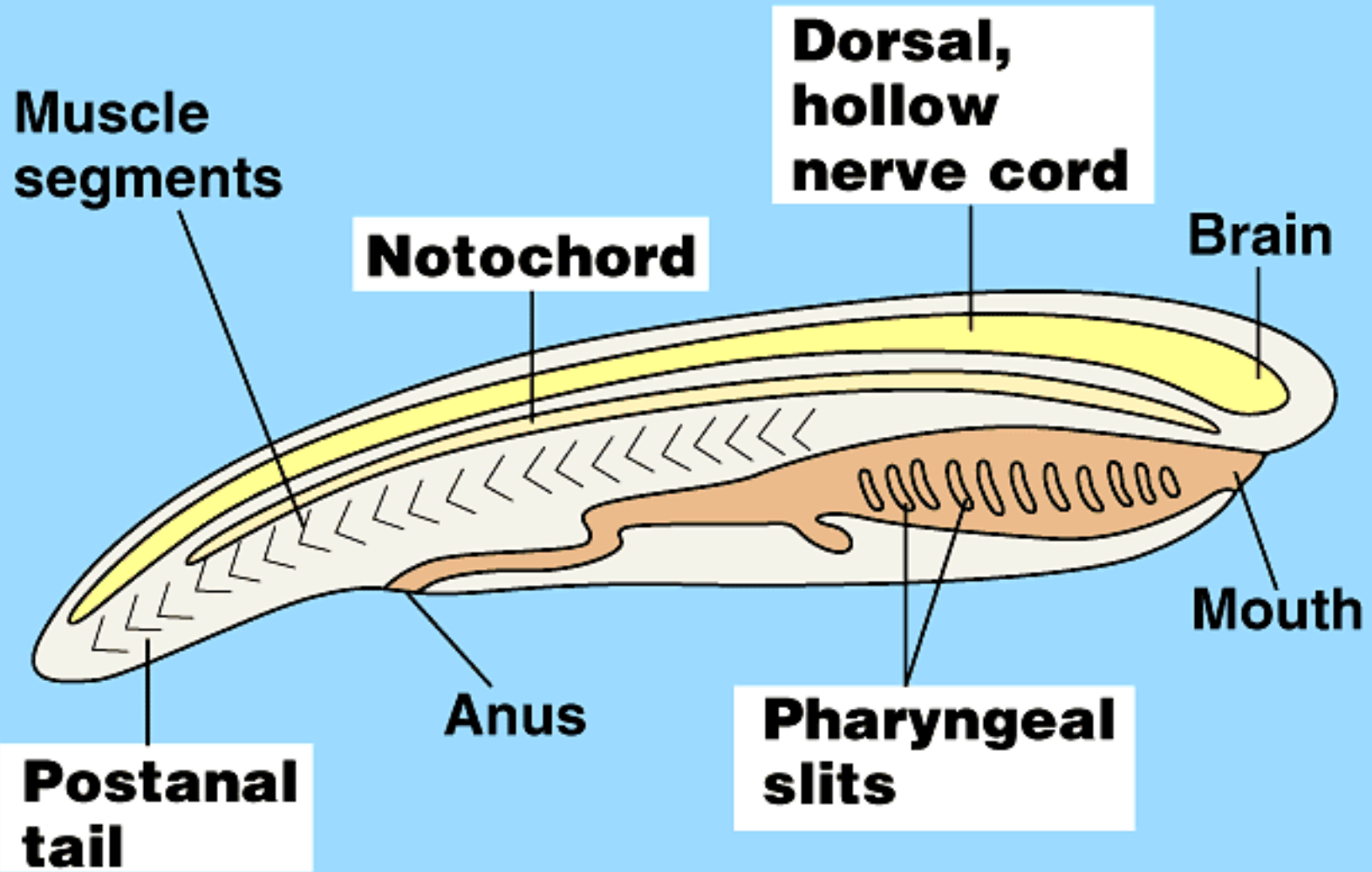


# Phylogenetic tree of the chordates



# Tunicates



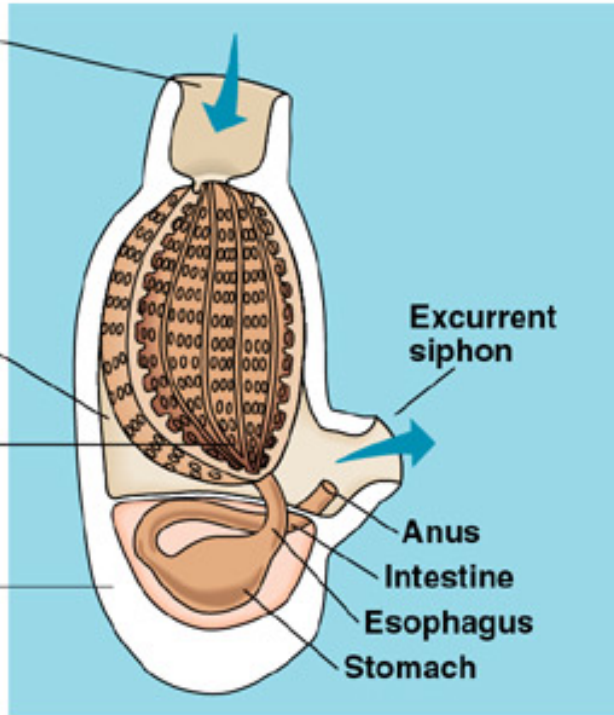
Incurrent siphon to mouth

Excurrent siphon

Atrium

Pharynx with numerous slits

Tunic



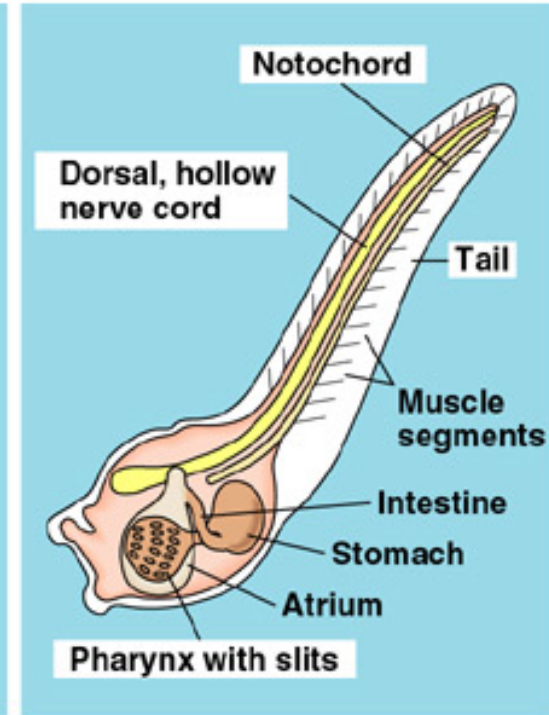
Excurrent siphon

Anus

Intestine

Esophagus

Stomach



Notochord

Dorsal, hollow nerve cord

Tail

Muscle segments

Intestine

Stomach

Atrium

Pharynx with slits

(a)

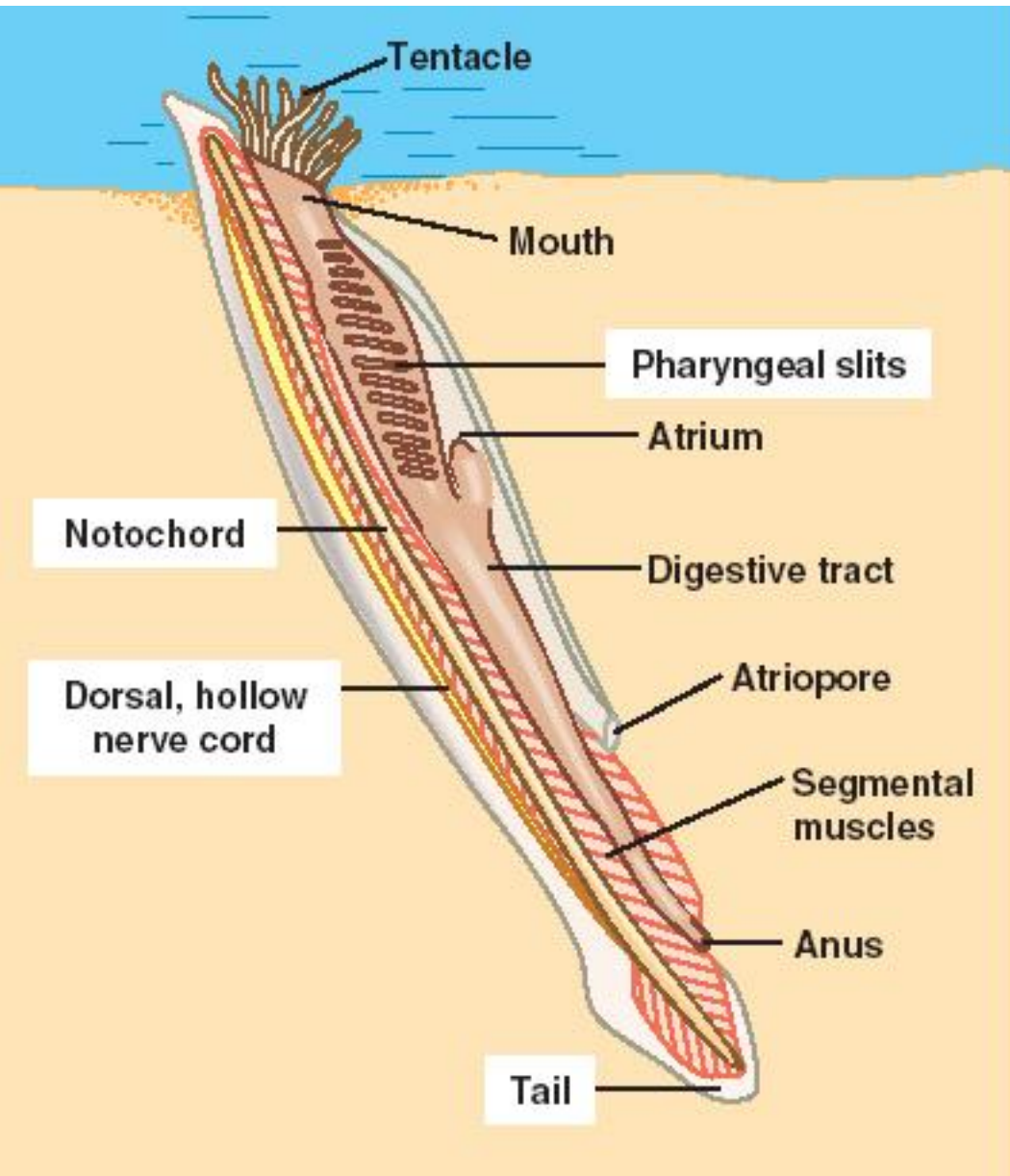
(b)

(c)

# Tunicates

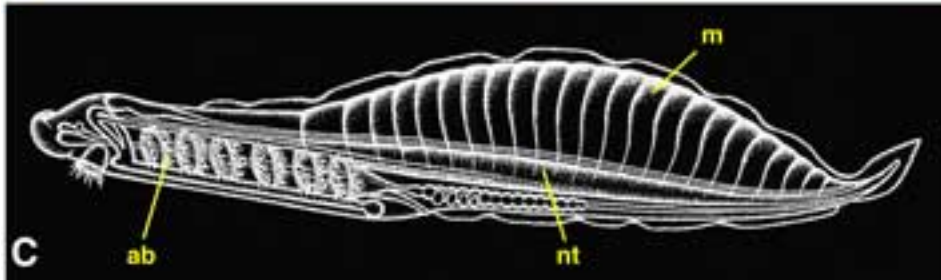


# Lancelets

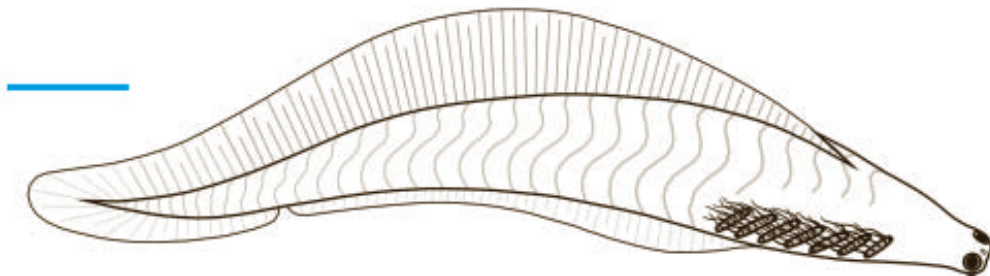
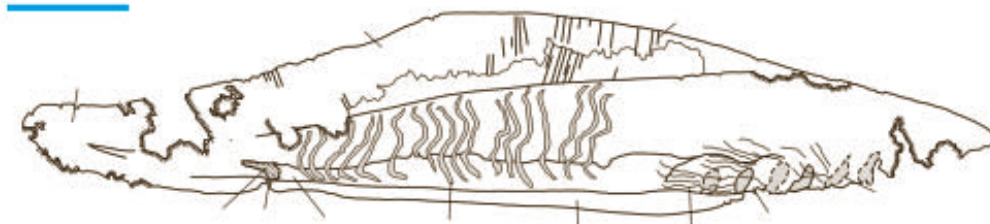
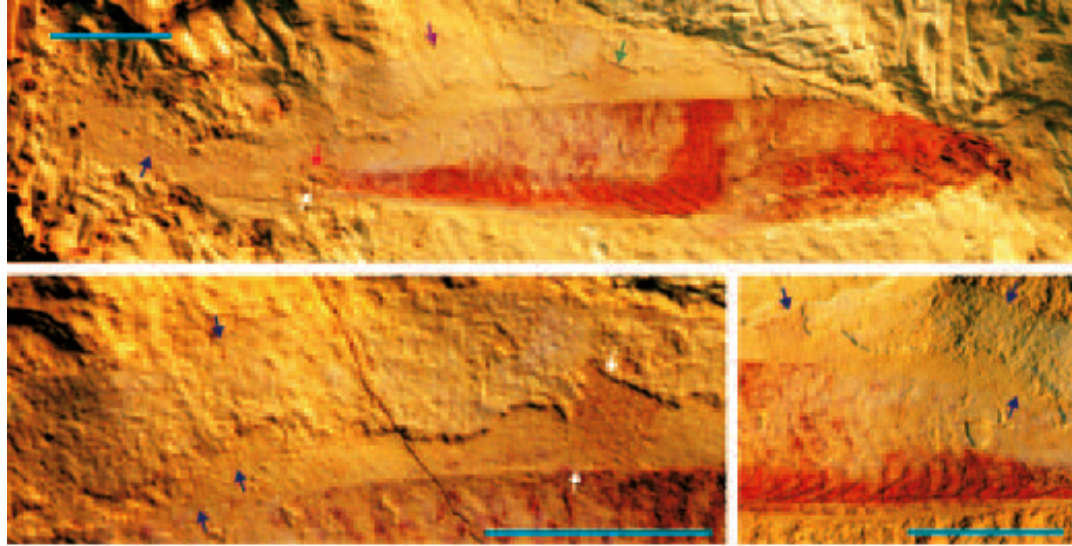




# H a i k u u a



# Haikuichthys



# Hagfish



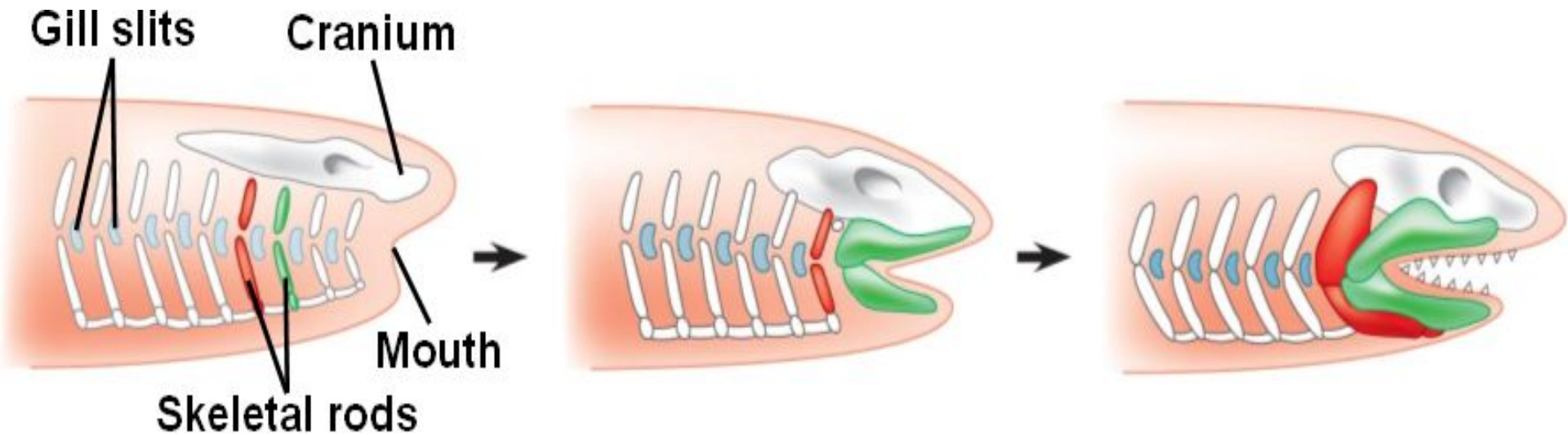
# Lamprey



# Gnathostomes



# Evolution of Vertebrate Jaws



# Chondrichthyans



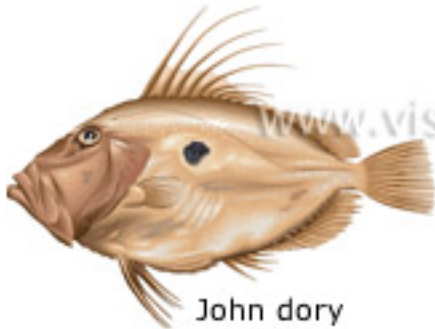
# Bony Fishes



brook trout



trout



John dory



Pacific salmon

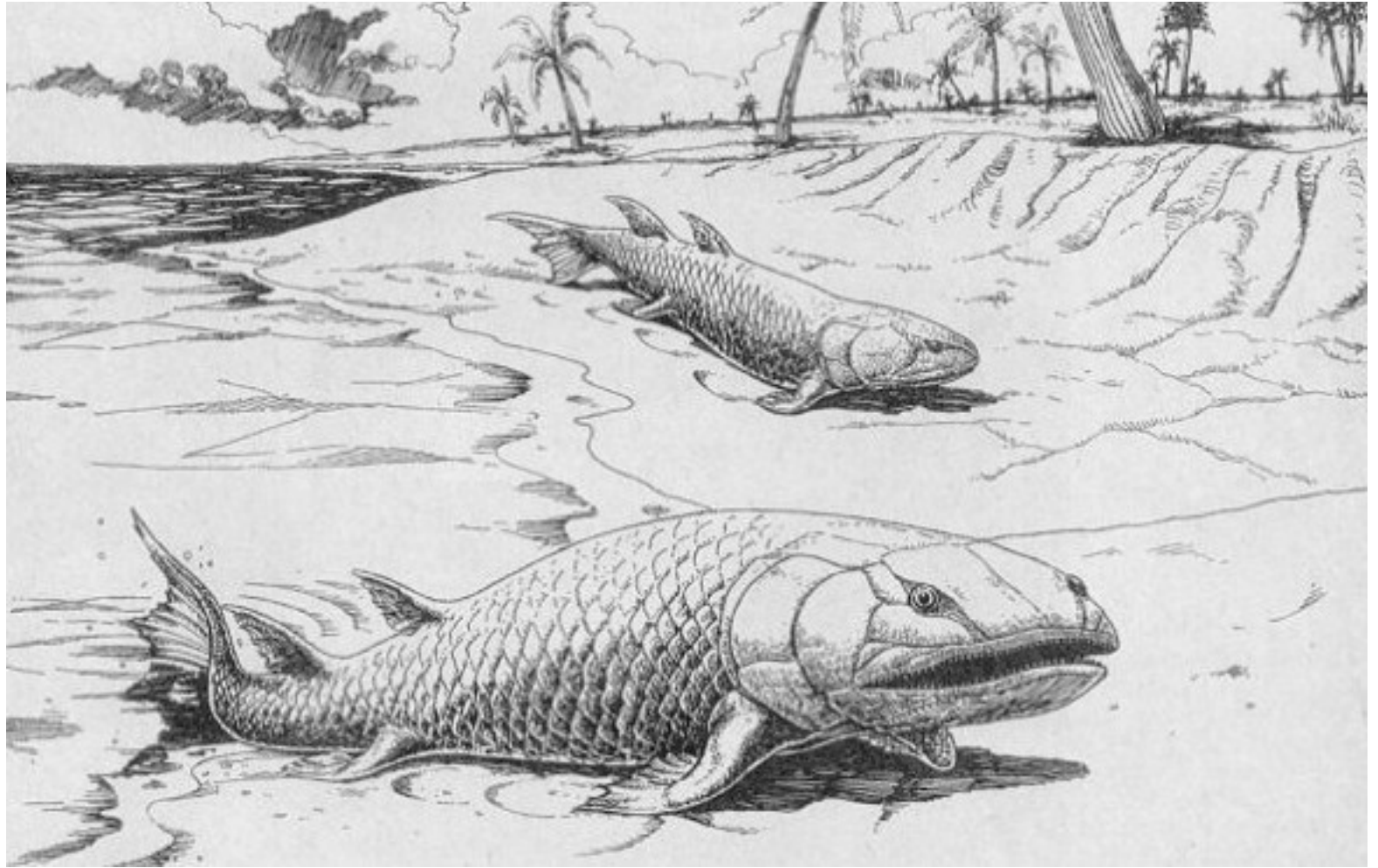


Atlantic salmon



# Tetrapods





# Amphibians



salamander



tree frog



common toad



newt

www.visualdictionaryonline.com

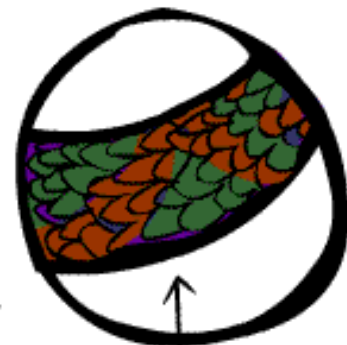
# REPTILES



- have scales, not fur.

- have dry skin.

- usually lay eggs, sometimes live young

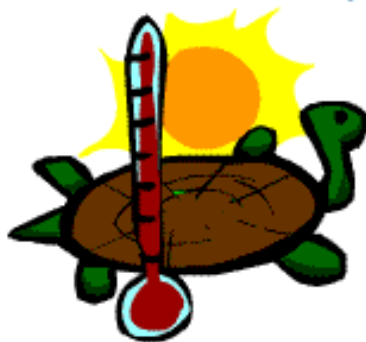


- ear holes instead of ears.

- 4 legs or no legs



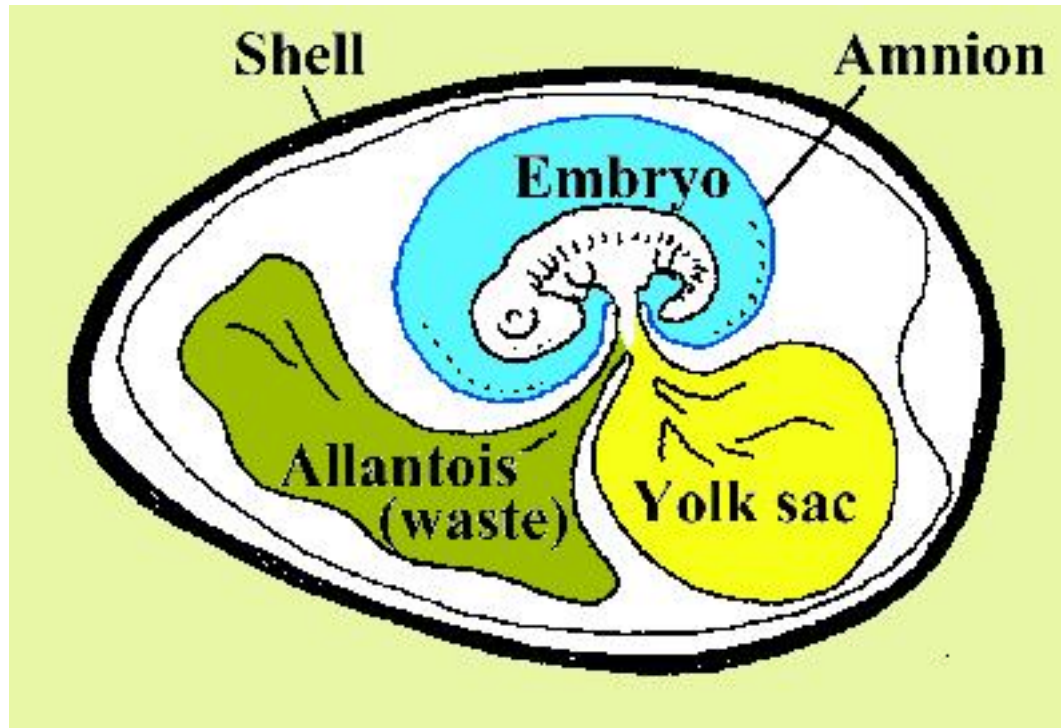
- cold-blooded.







# Amniotes

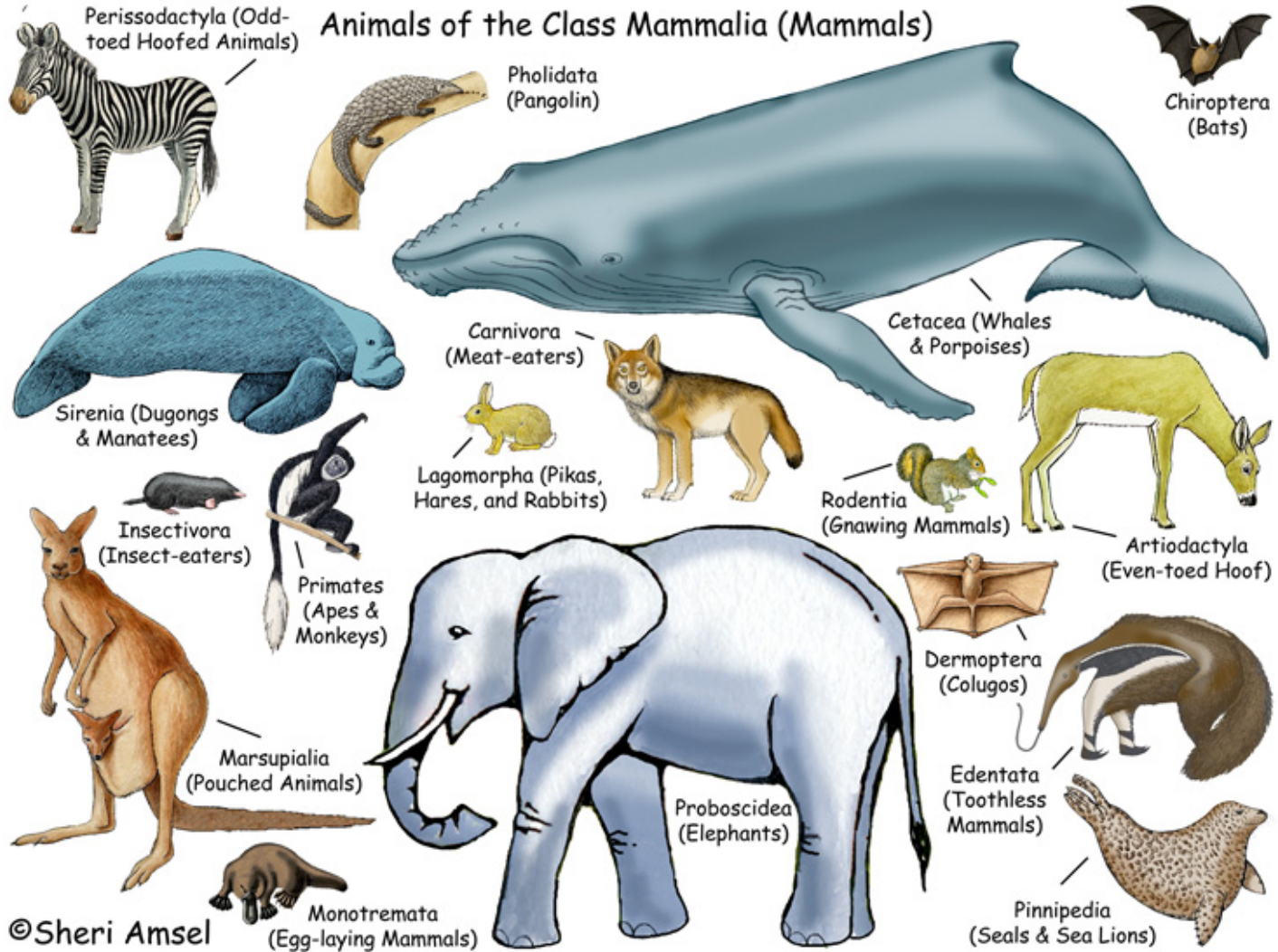


# Birds





# Mammals



©Sheri Amsel